

A photograph of a child's playroom. In the foreground, there is a large red rectangular table with several colorful plastic chairs (blue, orange, and purple) around it. The floor is covered with a large, multi-colored geometric patterned mat. In the background, there are shelves with toys, a small playhouse, and a doorway leading to another room. The room is brightly lit and decorated with colorful items.

Access to Quality Child Care in Amarillo, TX *October 2017*

Presentation Outline



Why Quality Child Care Matters

Subsidized Child Care Overview

Problems Facing Child Care in Texas

The Status of Amarillo

Policy Solutions

Why Quality Child Care Matters

Quality child care is quality early education, and leads to...



**Improved School-Readiness
and 3rd Grade Reading Levels**



**Higher Graduation Rates and a
Better Prepared Workforce**



More Working Families

...especially for low-income children.

Presentation Outline



Why Quality Child Care Matters

Subsidized Child Care Overview

Problems Facing Child Care in Texas

The Status of Amarillo

Policy Solutions

Subsidized Child Care in Texas

Funding from federal Child Care and Development Fund (CCDF)

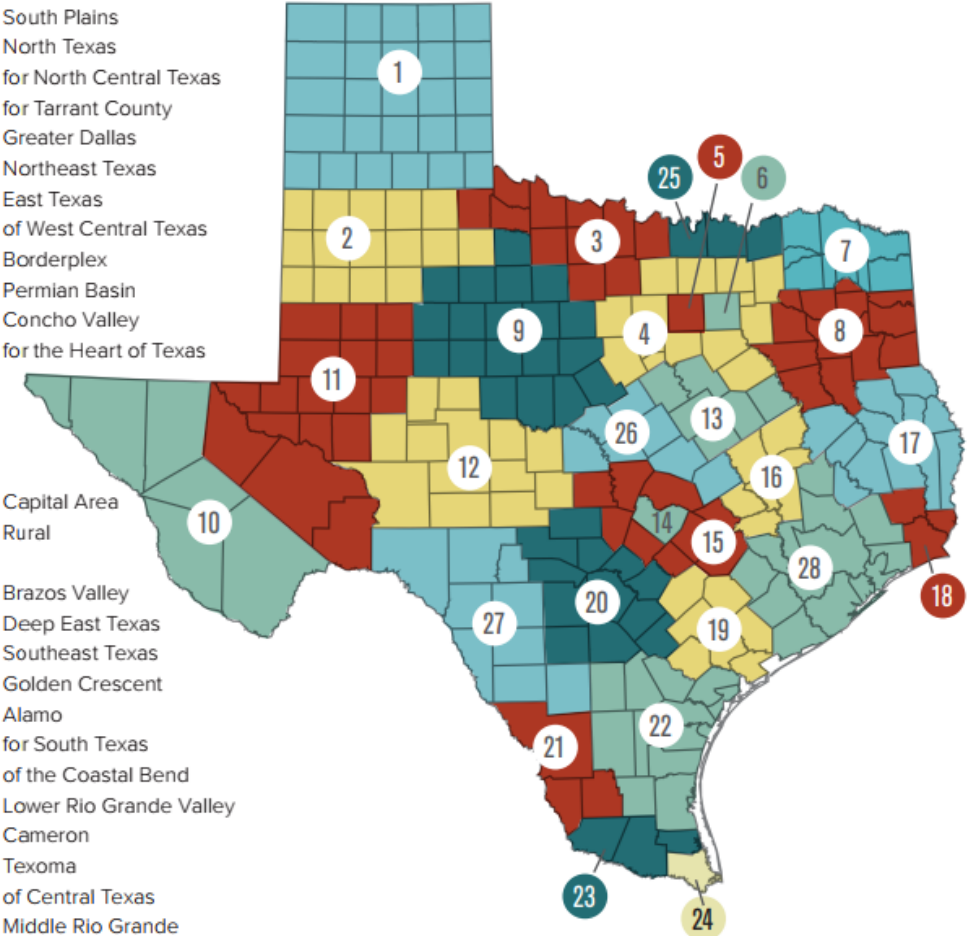
Subsidies administered by Texas Workforce Commission (TWC) through local workforce boards

Licensed centers, licensed homes, and registered homes eligible to receive subsidies

Map of Local Workforce Development Boards (Local Boards)

1. Workforce Solutions Panhandle
2. Workforce Solutions South Plains
3. Workforce Solutions North Texas
4. Workforce Solutions for North Central Texas
5. Workforce Solutions for Tarrant County
6. Workforce Solutions Greater Dallas
7. Workforce Solutions Northeast Texas
8. Workforce Solutions East Texas
9. Workforce Solutions of West Central Texas
10. Workforce Solutions Borderplex
11. Workforce Solutions Permian Basin
12. Workforce Solutions Concho Valley
13. Workforce Solutions for the Heart of Texas

14. Workforce Solutions Capital Area
15. Workforce Solutions Rural Capital Area
16. Workforce Solutions Brazos Valley
17. Workforce Solutions Deep East Texas
18. Workforce Solutions Southeast Texas
19. Workforce Solutions Golden Crescent
20. Workforce Solutions Alamo
21. Workforce Solutions for South Texas
22. Workforce Solutions of the Coastal Bend
23. Workforce Solutions Lower Rio Grande Valley
24. Workforce Solutions Cameron
25. Workforce Solutions Texoma
26. Workforce Solutions of Central Texas
27. Workforce Solutions Middle Rio Grande
28. Workforce Solutions Gulf Coast



Source: Texas Workforce Commission. (2016). *Workforce development boards' websites*. Retrieved from <http://www.twc.state.tx.us/partners/workforce-development-boards-websites>

Qualifications to Receive Subsidies

- Generally, children may receive childcare subsidies if they meet the following criteria:

- 1 Their families are low income, they are receiving or needing protective services, or their parents are receiving or transitioning off of public assistance
- 2 They are under the age of 13
- 3 Their parent(s) require child care to work or to attend job training or an education program

Presentation Outline

Why Quality Child Care Matters

Subsidized Child Care Overview

Problems Facing Child Care in Texas

The Status of Amarillo

Policy Solutions

Problems Facing Child Care in Texas



Low participation in Texas Rising Star (TRS) quality program



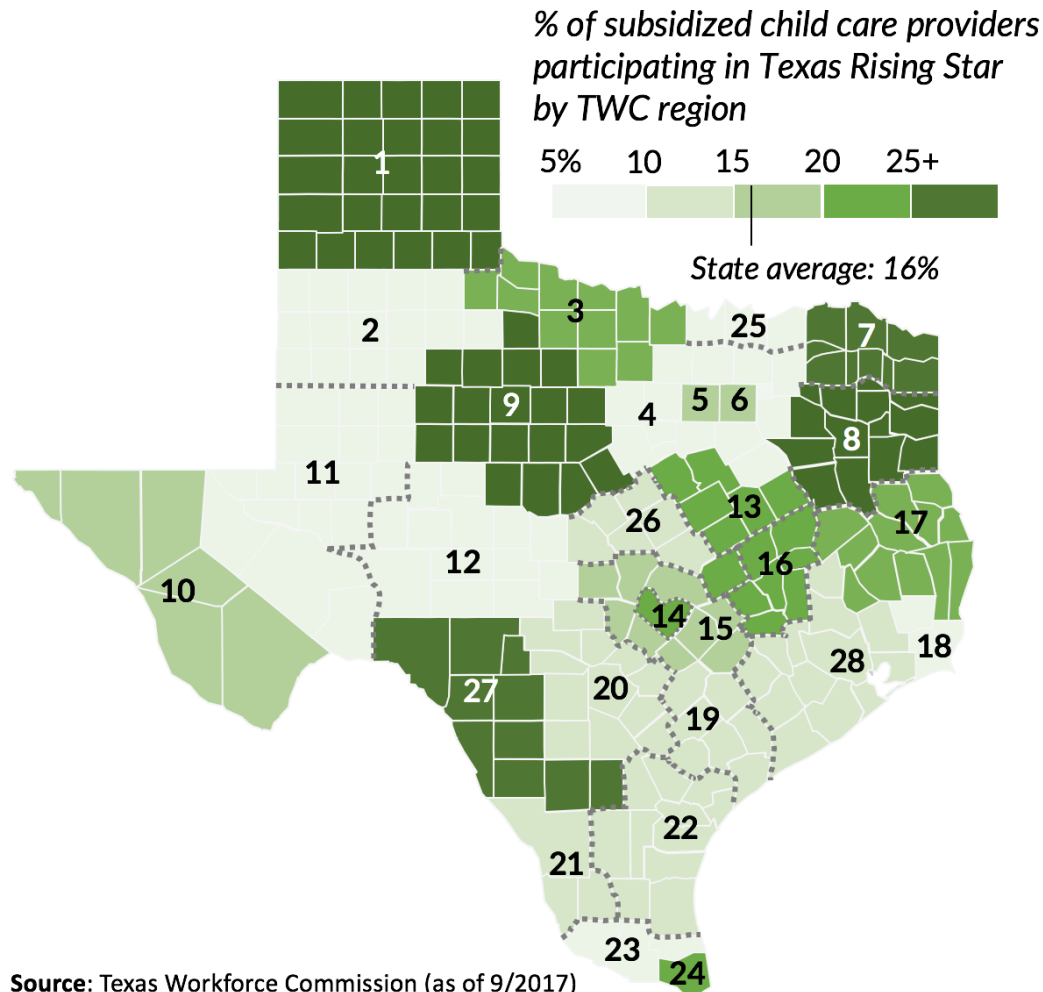
Little coordination among key stakeholders



Limited access to quality providers

Texas Rising Star Participation by TWC Board

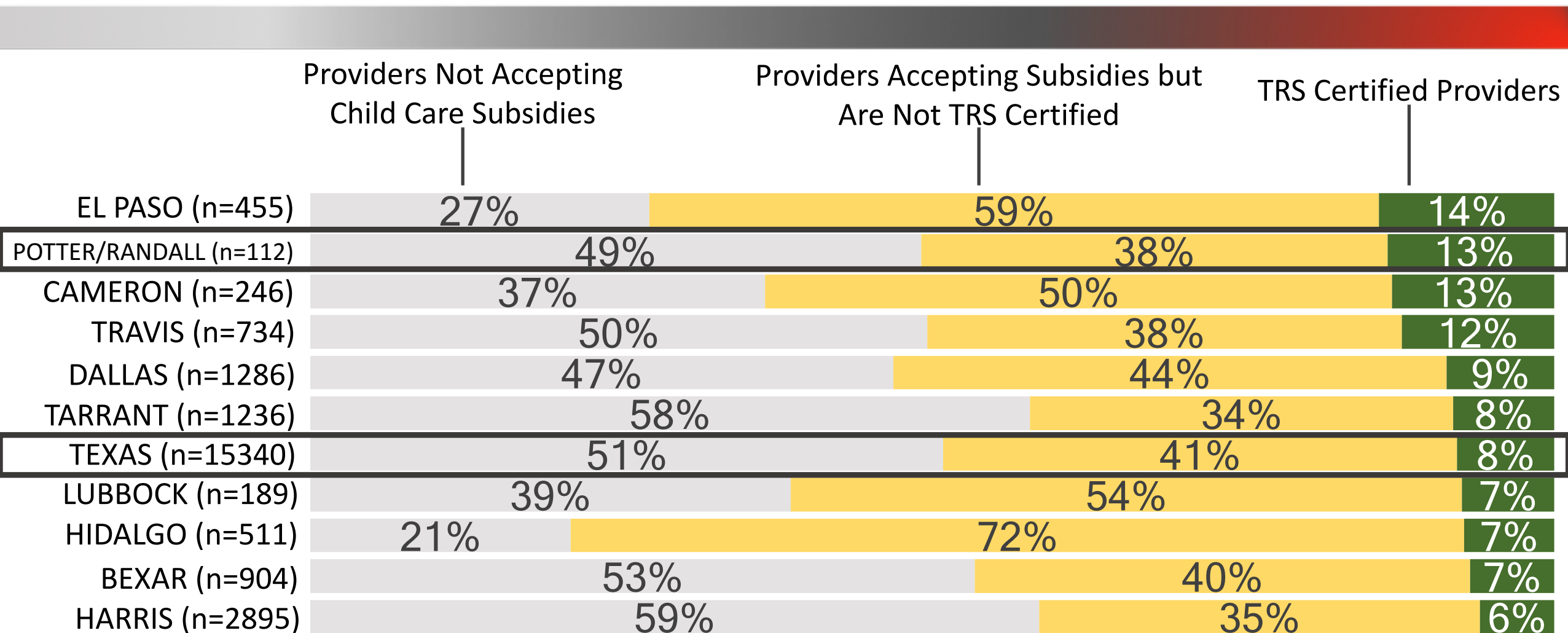
Texas Rising Star certifications among subsidy providers vary across TWC board regions



1. Panhandle: 29%
2. South Plains: 6%
3. North Texas: 22%
4. North Central Texas: 10%
5. Tarrant County: 19%
6. Greater Dallas: 16%
7. Northeast Texas: 32%
8. East Texas: 31%
9. West Central Texas: 31%
10. Borderplex: 19%
11. Permian Basin: 9%
12. Concho Valley: 5%
13. The Heart of Texas: 22%
14. Capital Area: 24%

15. Rural Capital Area: 20%
16. Brazos Valley: 23%
17. Deep East Texas: 19%
18. Southeast Texas: 6%
19. Golden Crescent: 14%
20. Alamo: 13%
21. South Texas: 12%
22. Coastal Bend: 17%
23. Lower Rio Grande Valley: 9%
24. Cameron: 21%
25. Texoma: 9%
26. Central Texas: 14%
27. Middle Rio Grande: 28%
28. Gulf Coast: 13%

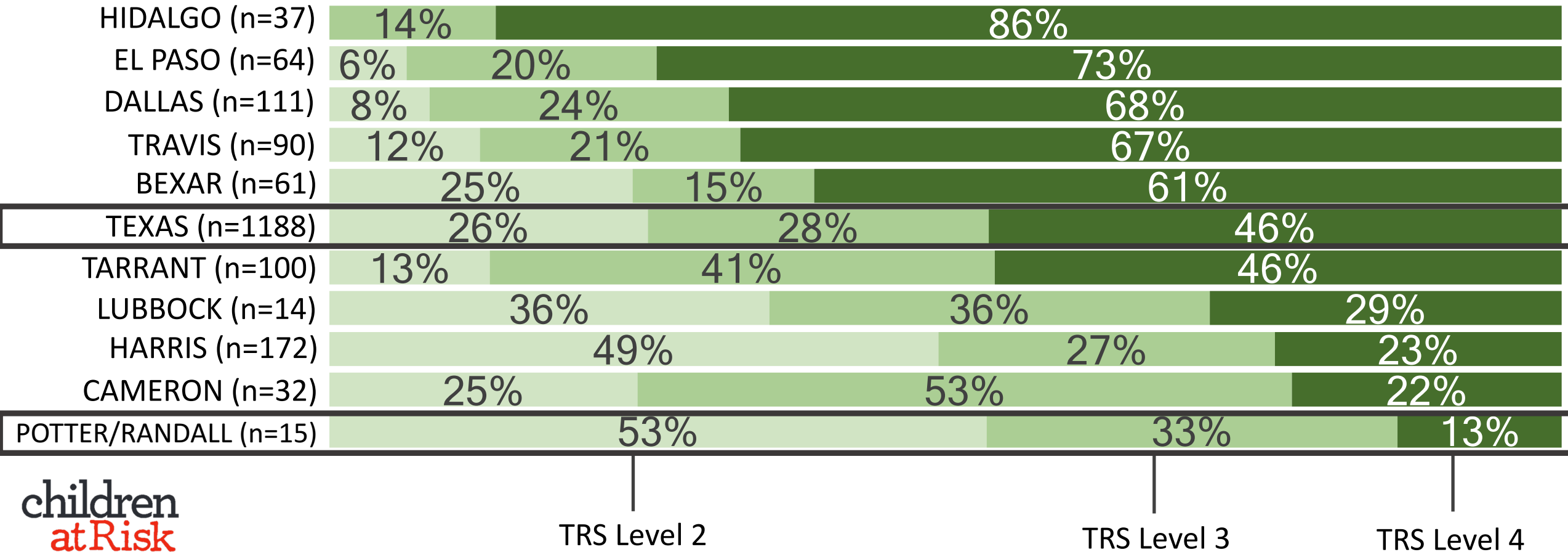
Subsidy and Texas Rising Star Participation by Region



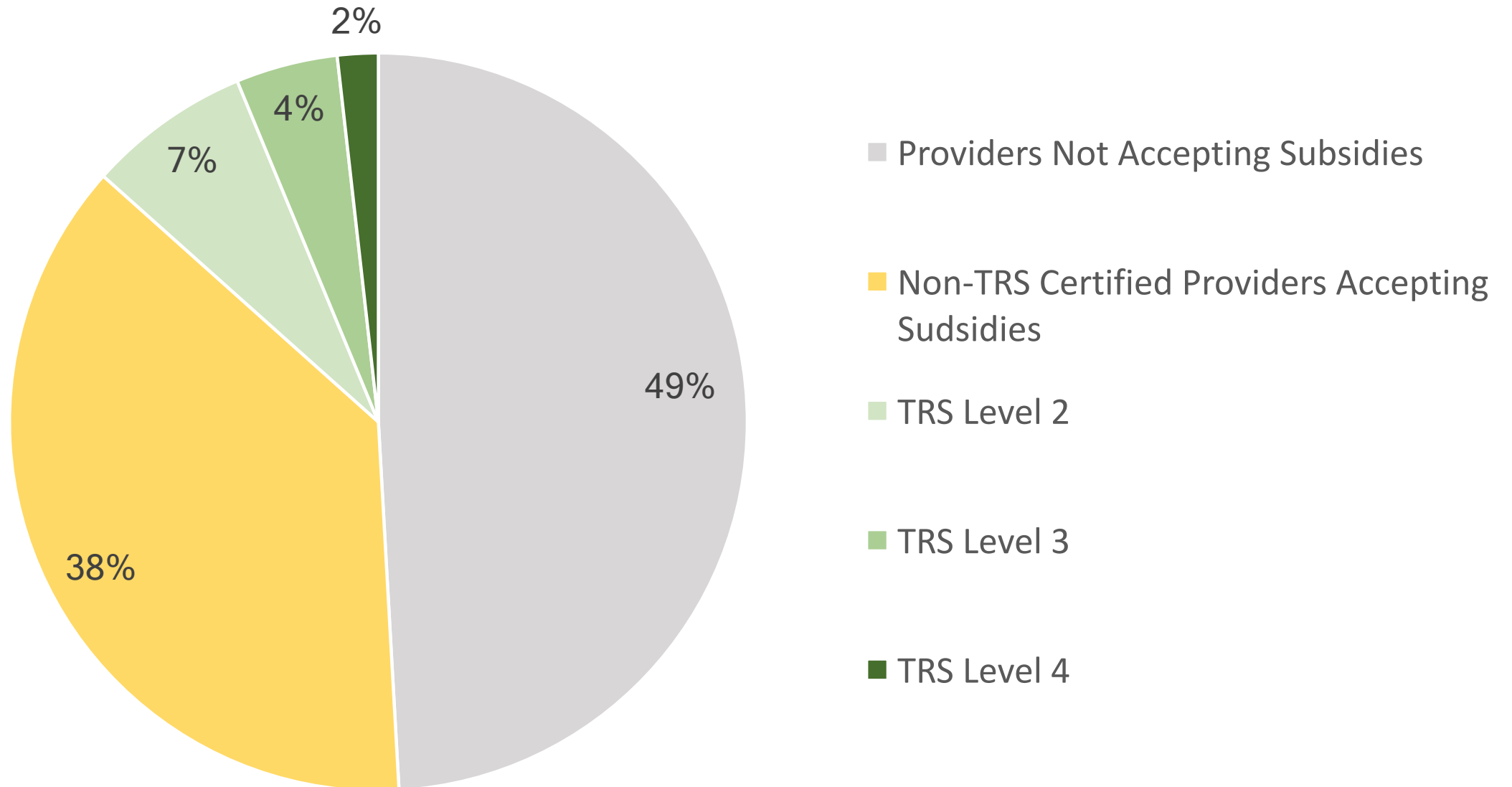
n=Total number of licensed child care providers
in each region

Texas Rising Star Level Comparison by Region

n=Total number of TRS providers in each region



Texas Rising Star Participation: Potter and Randall Counties



Presentation Outline

Why Quality Child Care Matters

Subsidized Child Care Overview

Problems Facing Child Care in Texas

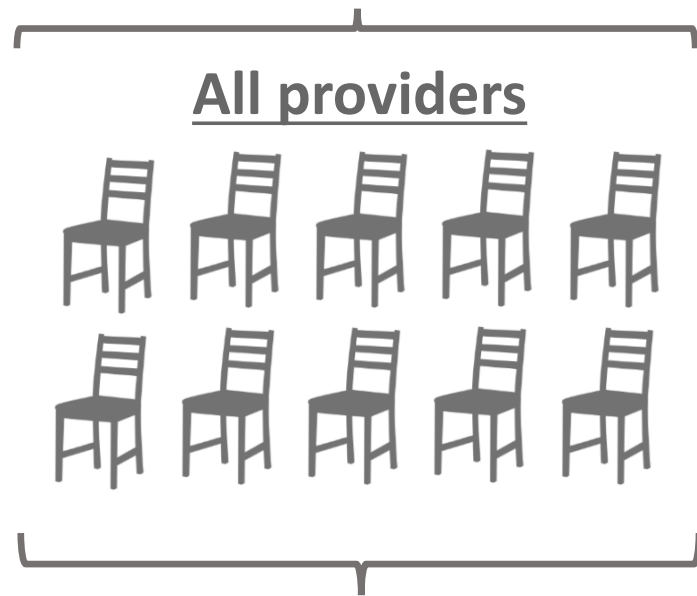
The Status of Amarillo

Policy Solutions

How we calculated the supply and demand for child care

For more information on our methodology, please visit: <http://childrenatrisk.org/texas-child-care-desert-methodology/>

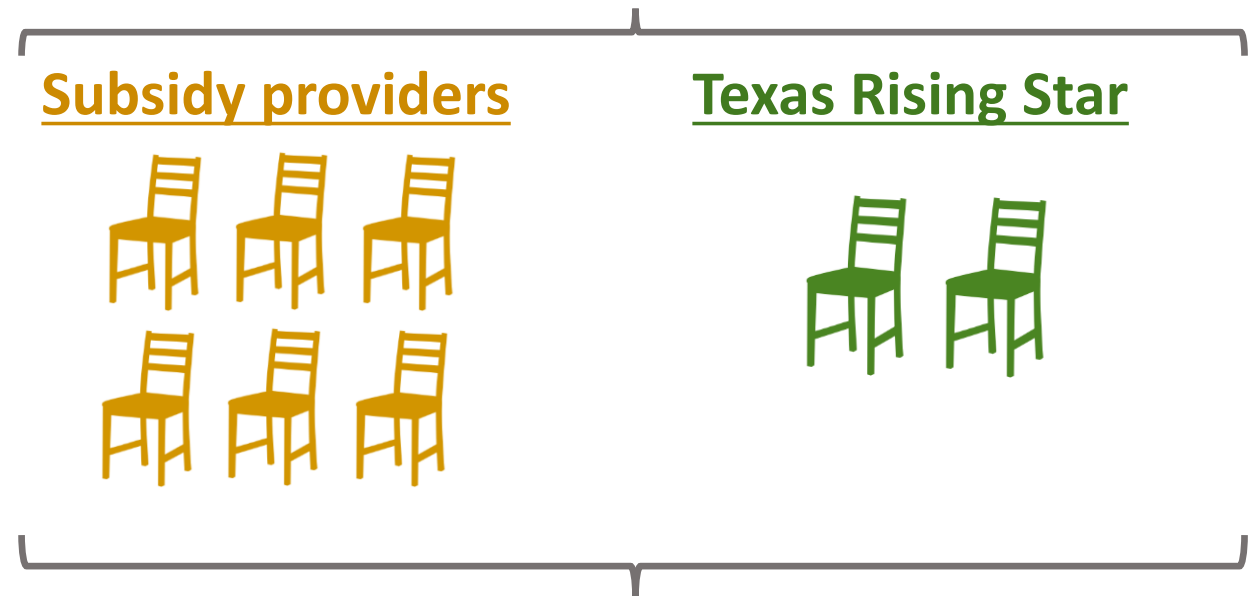
Includes supply of **all** child care seats based on licensed capacity*



Includes demand among **all** children under 6 with working parents

Supply

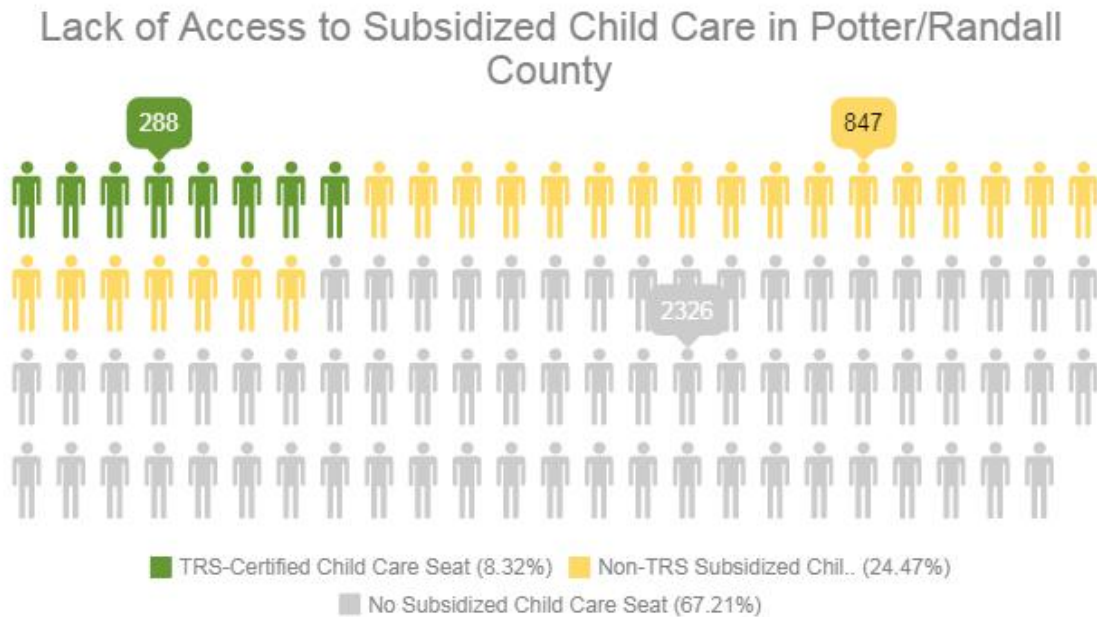
Includes estimated supply of subsidy seats* based on each TWC board region's subsidy target



Only includes demand among **low-income** children under 6 with working parents

Demand

Key Findings for Potter and Randall Counties



There are **2,300 more** low-income children than subsidized child care seats (67% lack access)

There are **3,200 more** low-income children than TRS-certified seats (92% lack access)

Statewide, 71% of low-income children lack access to a subsidized seat
94% lack access to a TRS-certified seat

Key Findings for Potter and Randall Counties



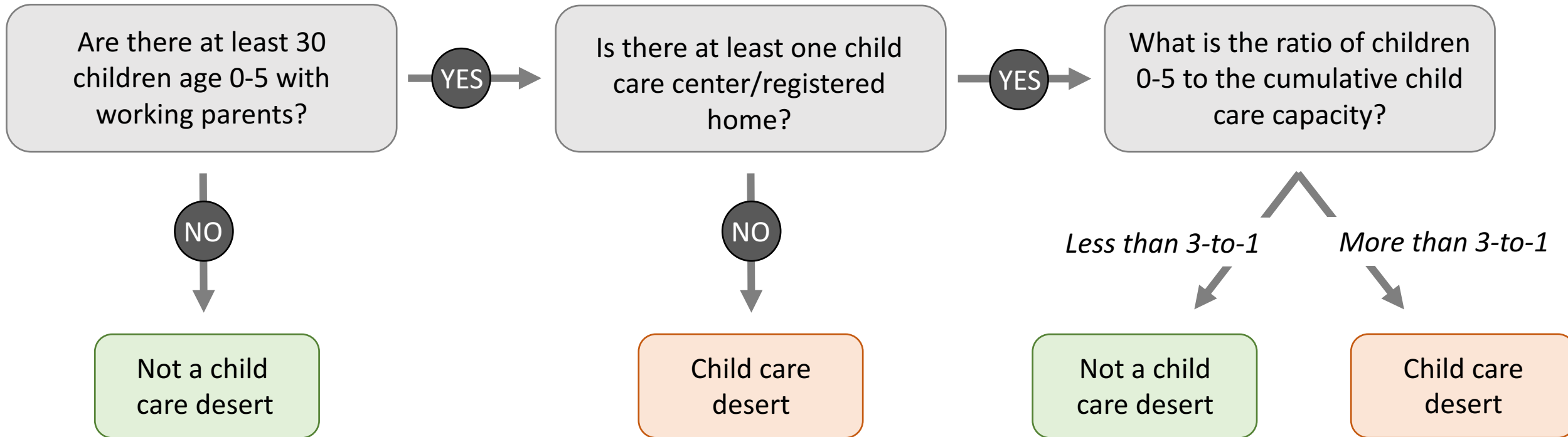
Lack of quality care: 10 ZIP codes have **0 TRS-certified seats** per thousand low-income children with working parents



High subsidy access: Only **half** of low-income children with working parents live in a subsidy child care desert, vs. 75% statewide

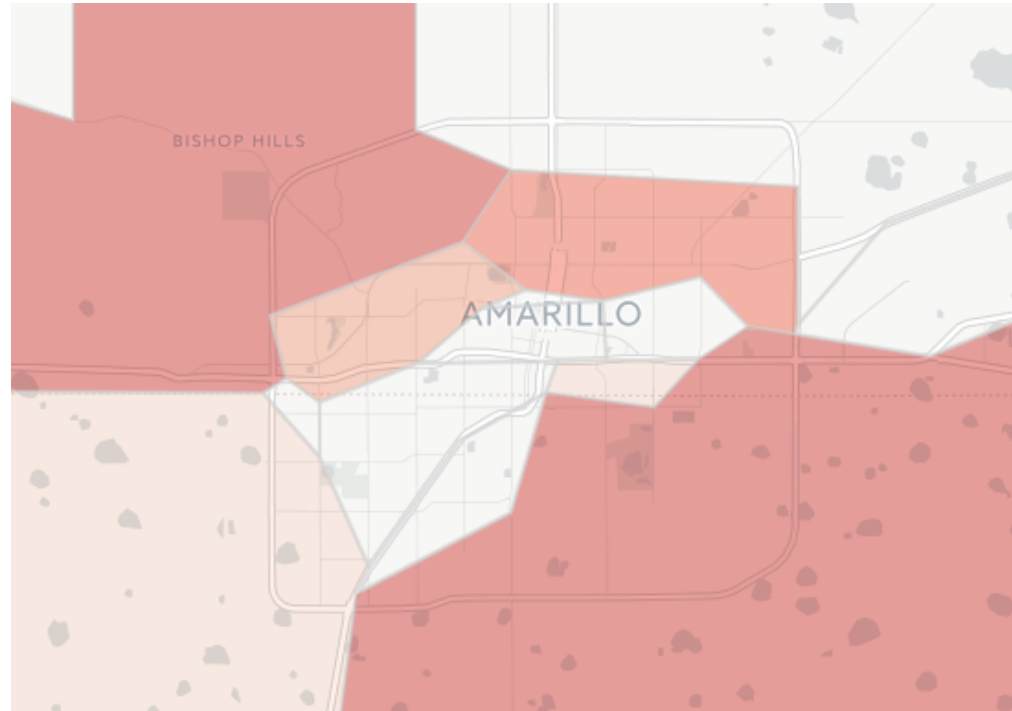
How we calculated child care deserts

Is this ZIP code a child care desert?



Subsidized and TRS deserts only include **low-income** children and providers that accept subsidy/are TRS-certified

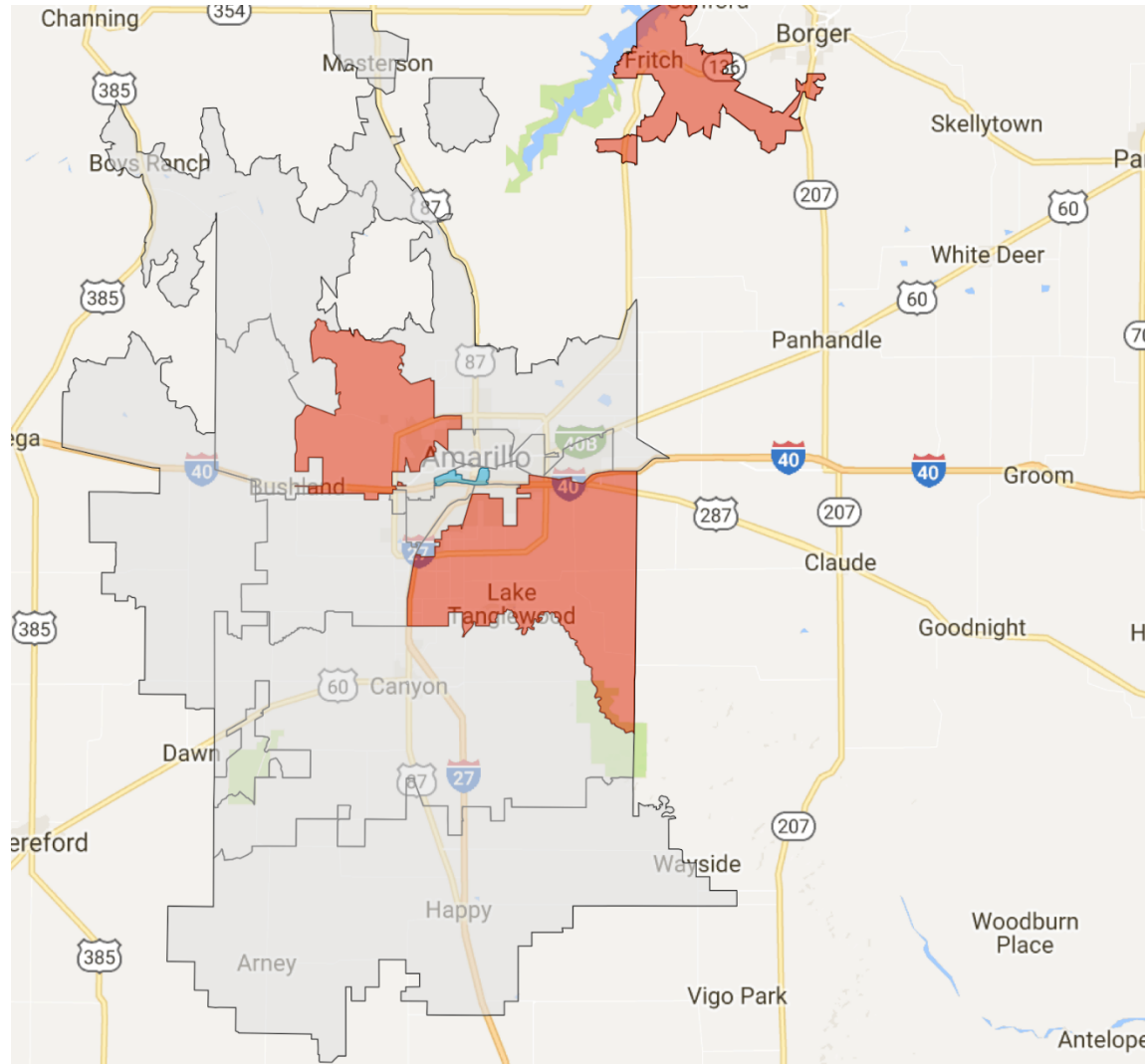
Potter/Randall Counties Characteristics



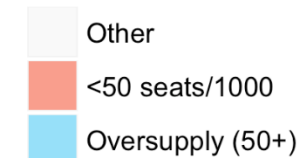
Child Care Seats	Subsidized Child Care Seats	Texas Rising Star Seats	TRS 4-star Seats
690 per thousand	328 per thousand	83 per thousand	6 per thousand

Only includes child care demand among **low-income** children

Undersupply & Oversupply: Amarillo's Subsidized Seats



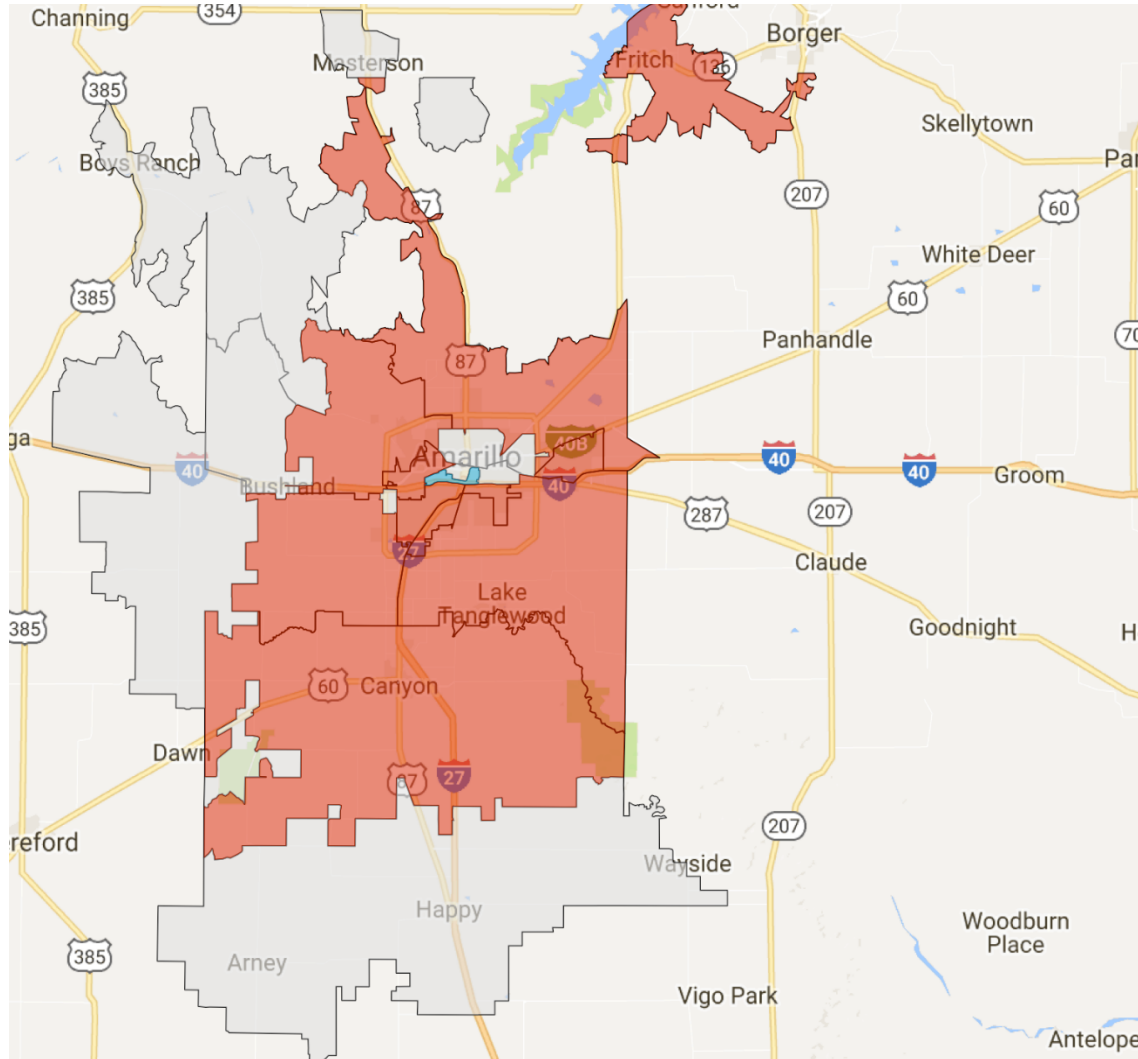
Subsidized seats:
over- and under-supply
of child care seats
for low-income kids



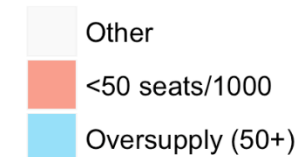
ZIP Code	Subsidy Capacity per 1000 Low-Income Children
79036	0
79118	0
79124	0

ZIP Code	Number of surplus subsidy seats
79102	+71

Undersupply & Oversupply: Amarillo's TRS Seats



TRS seats:
over- and under-supply
of child care seats
for low-income kids



ZIP Code	TRS Seats per 1000 Low-Income Children
79015	0
79036	0
79103	0
79108	0
79109	0
79110	0
79111	0
79118	0
79119	0
79124	0
79106	13

ZIP Code	Number of surplus TRS seats
79102	+69

Child Care Deserts in Austin

<http://childrenatrisk.org/childcaredesertmap/>

Presentation Outline



Why Quality Child Care Matters

Subsidized Child Care Overview

Problems Facing Child Care in Texas

The Status of Amarillo

Policy Solutions

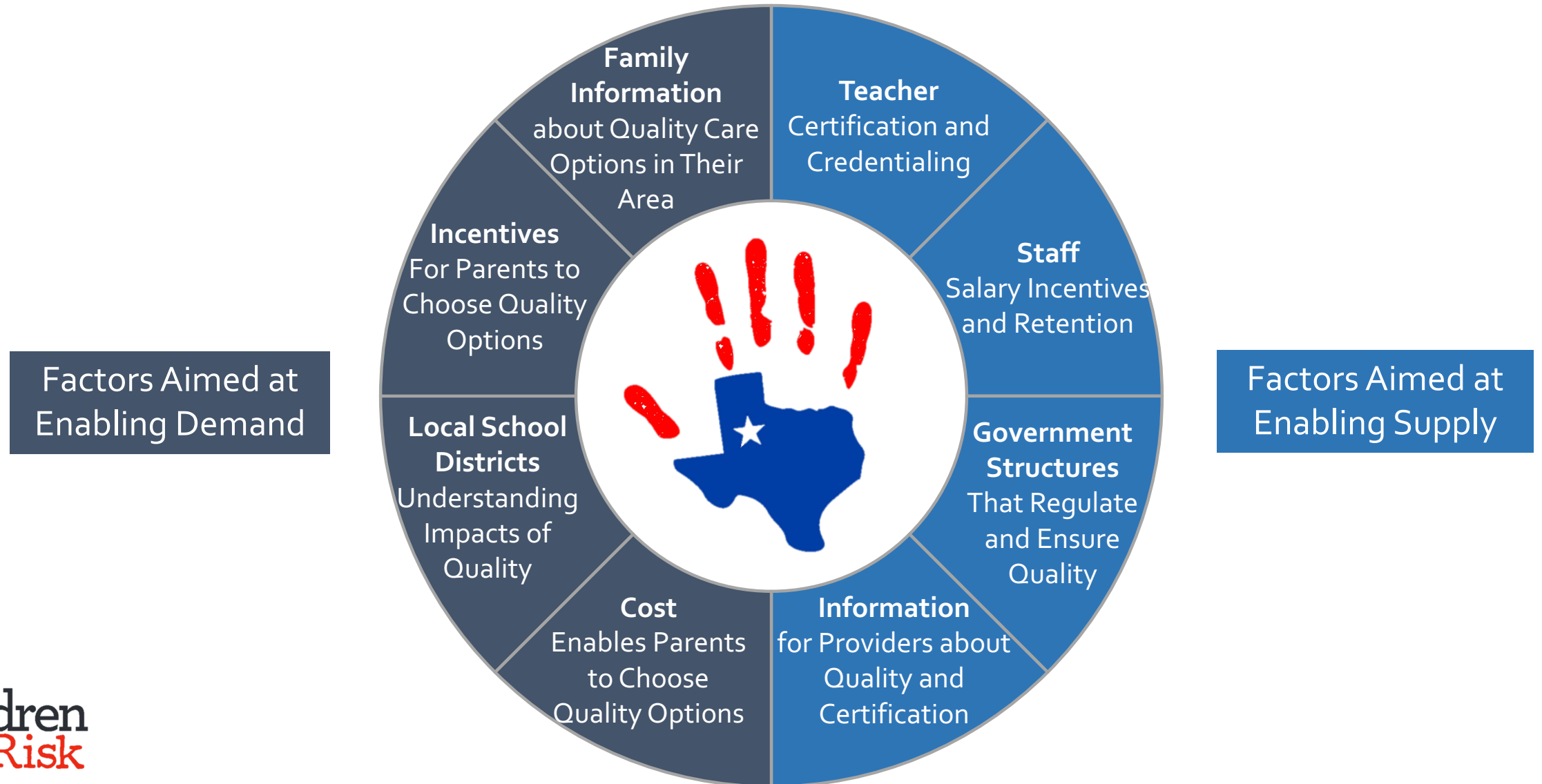
Policy Solutions?

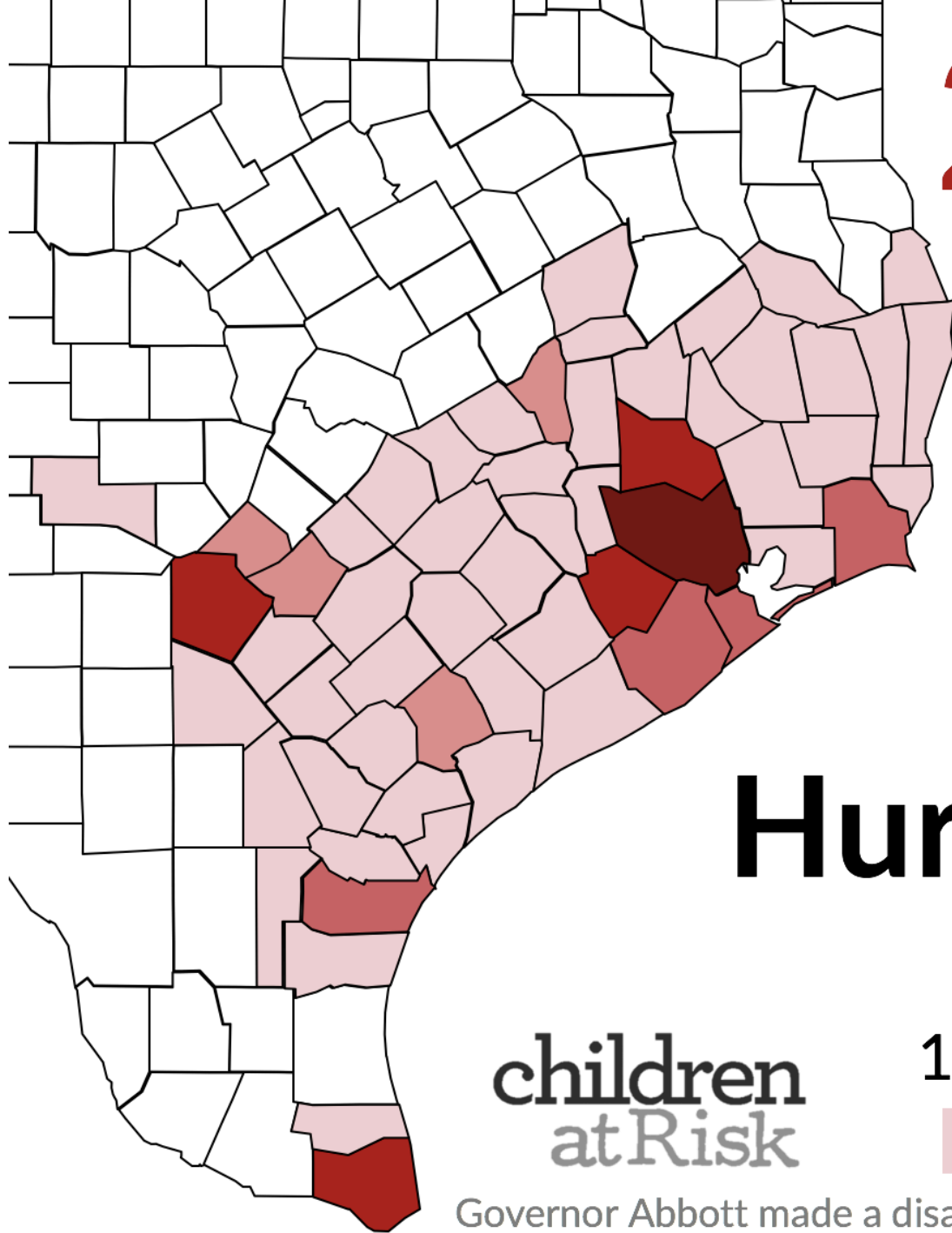
What could work in Lubbock?

What could work in Texas?



Ecosystem for Quality Child Care





2.9 million
children live
in 58 counties
devastated by
Hurricane Harvey

children
atRisk

Number of children

1k 25k 50k 100k 1 mill.



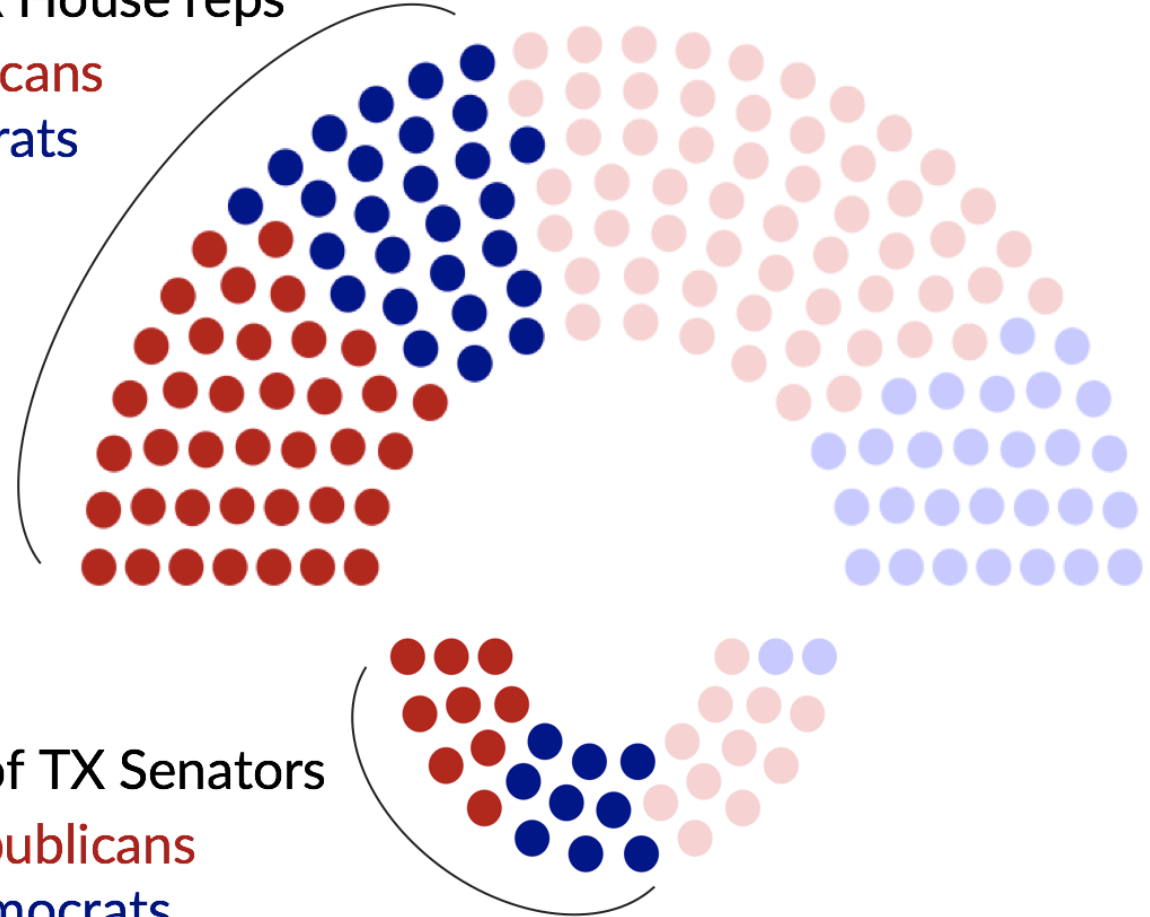
Governor Abbott made a disaster proclamation for these 58 counties on 8/27/17

Who represents the **2.9m** Texas children affected by Hurricane Harvey?

children
atRisk

Source: CHILDREN AT RISK analysis of data on
legislative representation in the 58 counties
declared disaster areas by Governor Abbott

44% of TX House reps
38 Republicans
27 Democrats



58% of TX Senators
9 Republicans
9 Democrats