



Access to Quality Child Care in
The Rio Grande Valley
September 2017

Presentation Outline

Why Quality Child Care Matters

Subsidized Child Care Overview

Problems Facing Child Care in Texas

The Status of the Rio Grande Valley

Policy Solutions

Why Quality Child Care Matters

Quality child care is quality early education, and leads to...



**Improved School-Readiness
and 3rd Grade Reading Levels**



**Higher Graduation Rates and a
Better Prepared Workforce**



More Working Families

...especially for low income children.

Presentation Outline

Why Quality Child Care Matters

Subsidized Child Care Overview

Problems Facing Child Care in Texas

The Status of the Rio Grande Valley

Policy Solutions

Subsidized Child Care in Texas

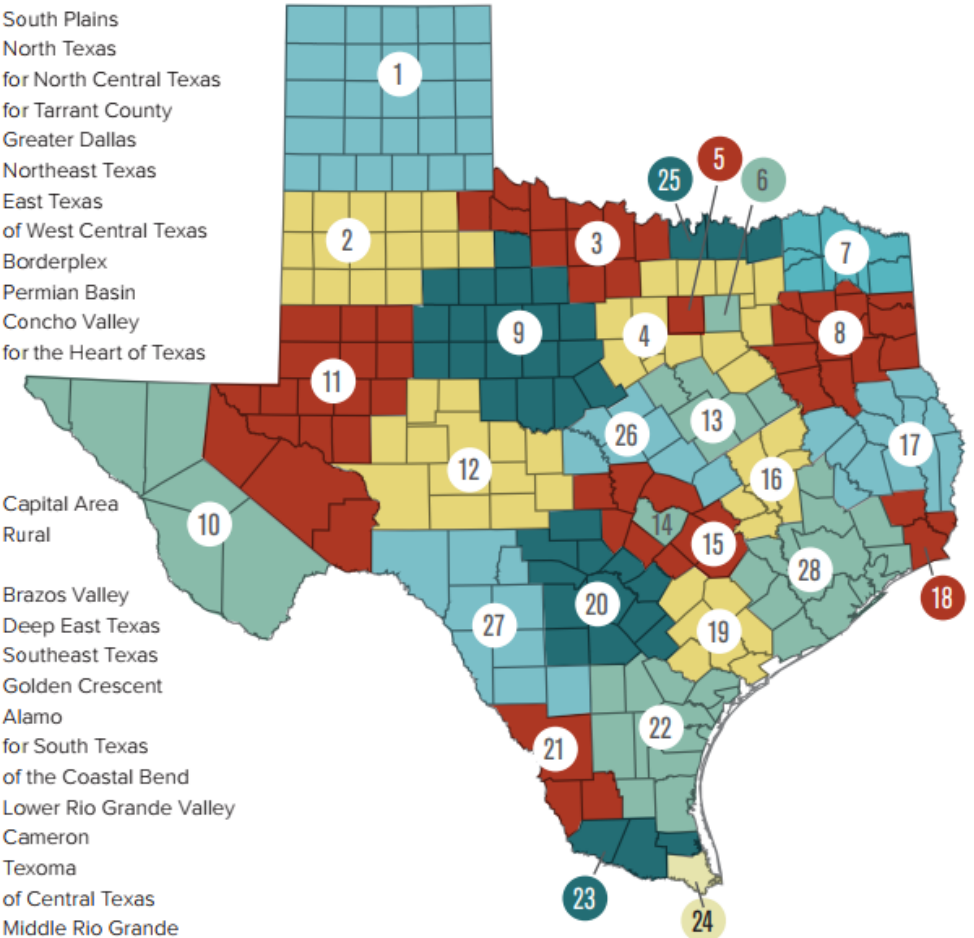
Funding from federal Child Care and Development Fund (CCDF)

Subsidies administered by Texas Workforce Commission (TWC) through local workforce boards

Licensed centers, licensed homes, and registered homes eligible to receive subsidies

Map of Local Workforce Development Boards (Local Boards)

1. Workforce Solutions Panhandle
2. Workforce Solutions South Plains
3. Workforce Solutions North Texas
4. Workforce Solutions for North Central Texas
5. Workforce Solutions for Tarrant County
6. Workforce Solutions Greater Dallas
7. Workforce Solutions Northeast Texas
8. Workforce Solutions East Texas
9. Workforce Solutions of West Central Texas
10. Workforce Solutions Borderplex
11. Workforce Solutions Permian Basin
12. Workforce Solutions Concho Valley
13. Workforce Solutions for the Heart of Texas
14. Workforce Solutions Capital Area
15. Workforce Solutions Rural Capital Area
16. Workforce Solutions Brazos Valley
17. Workforce Solutions Deep East Texas
18. Workforce Solutions Southeast Texas
19. Workforce Solutions Golden Crescent
20. Workforce Solutions Alamo
21. Workforce Solutions for South Texas
22. Workforce Solutions of the Coastal Bend
23. Workforce Solutions Lower Rio Grande Valley
24. Workforce Solutions Cameron
25. Workforce Solutions Texoma
26. Workforce Solutions of Central Texas
27. Workforce Solutions Middle Rio Grande
28. Workforce Solutions Gulf Coast



Qualifications to Receive Subsidies

- Generally, children may receive childcare subsidies if they meet the following criteria:
 - 1 Their families are low income, they are receiving or needing protective services, or their parents are receiving or transitioning off of public assistance
 - 2 They are under the age of 13
 - 3 Their parent(s) require child care to work or to attend job training or an education program

Presentation Outline

Why Quality Child Care Matters

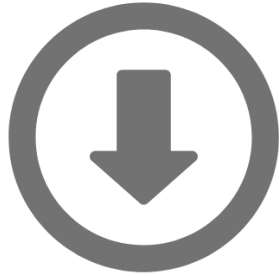
Subsidized Child Care Overview

Problems Facing Child Care in Texas

The Status of the Rio Grande Valley

Policy Solutions

Problems Facing Child Care in Texas



Low participation in Texas Rising Star (TRS) quality program



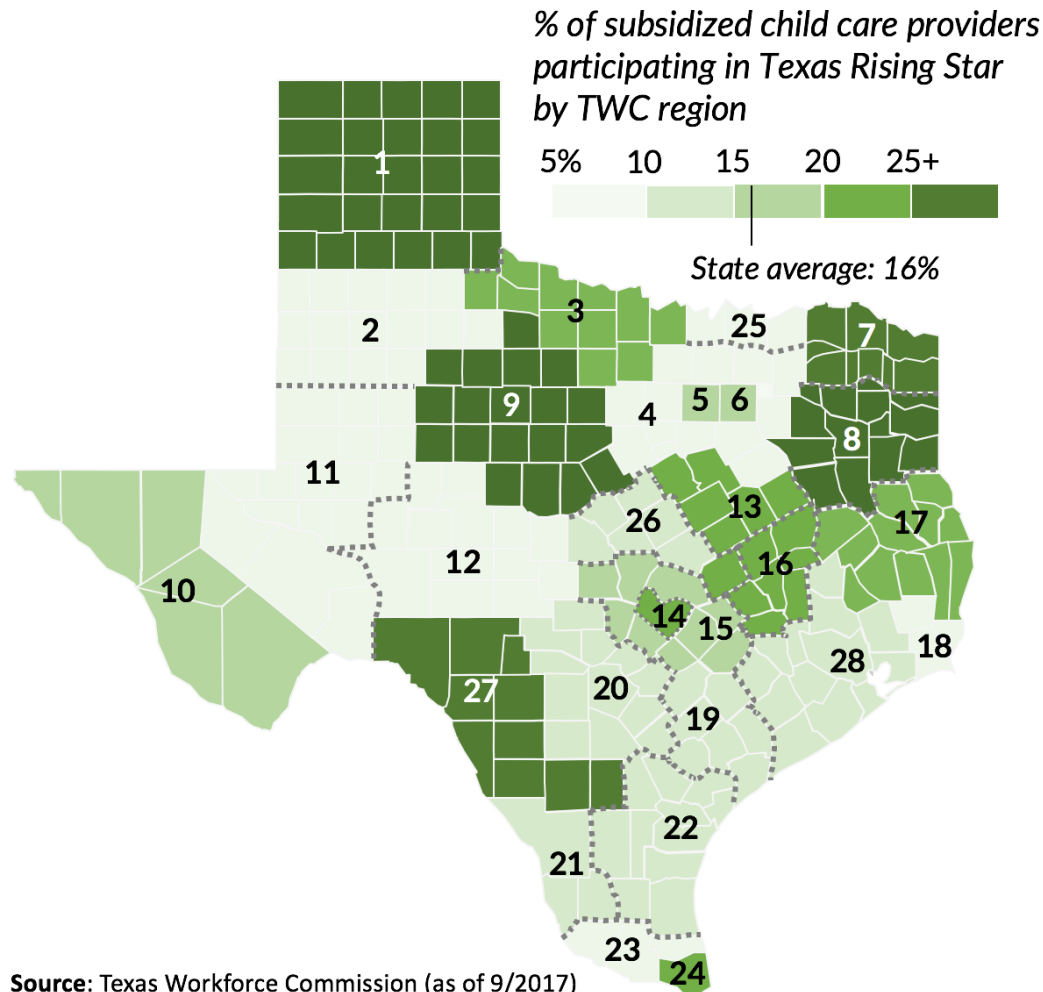
Little coordination among key stakeholders



Limited access to quality providers

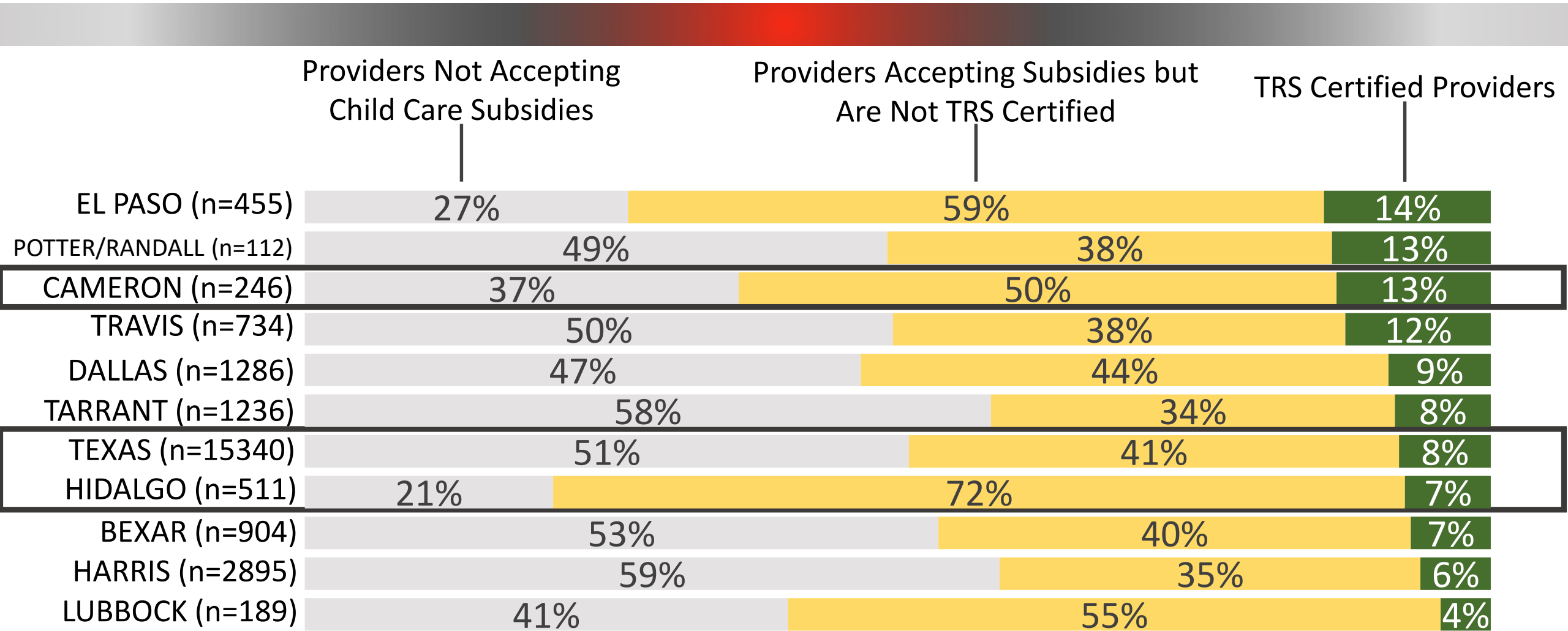
Texas Rising Star Participation by TWC Board

Texas Rising Star certifications among subsidy providers vary across TWC board regions



1. Panhandle: 29%
2. South Plains: 6%
3. North Texas: 22%
4. North Central Texas: 10%
5. Tarrant County: 19%
6. Greater Dallas: 16%
7. Northeast Texas: 32%
8. East Texas: 31%
9. West Central Texas: 31%
10. Borderplex: 19%
11. Permian Basin: 9%
12. Concho Valley: 5%
13. The Heart of Texas: 22%
14. Capital Area: 24%
15. Rural Capital Area: 20%
16. Brazos Valley: 23%
17. Deep East Texas: 19%
18. Southeast Texas: 6%
19. Golden Crescent: 14%
20. Alamo: 13%
21. South Texas: 12%
22. Coastal Bend: 17%
23. Lower Rio Grande Valley: 9%
24. Cameron: 21%
25. Texoma: 9%
26. Central Texas: 14%
27. Middle Rio Grande: 28%
28. Gulf Coast: 13%

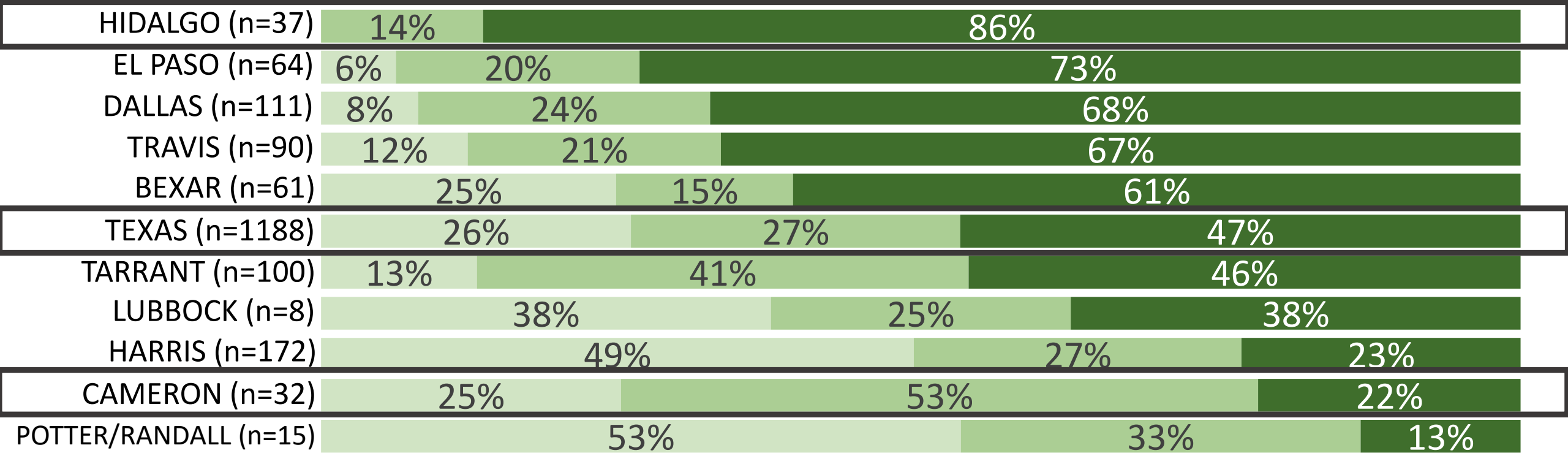
Subsidy and Texas Rising Star Participation by Region



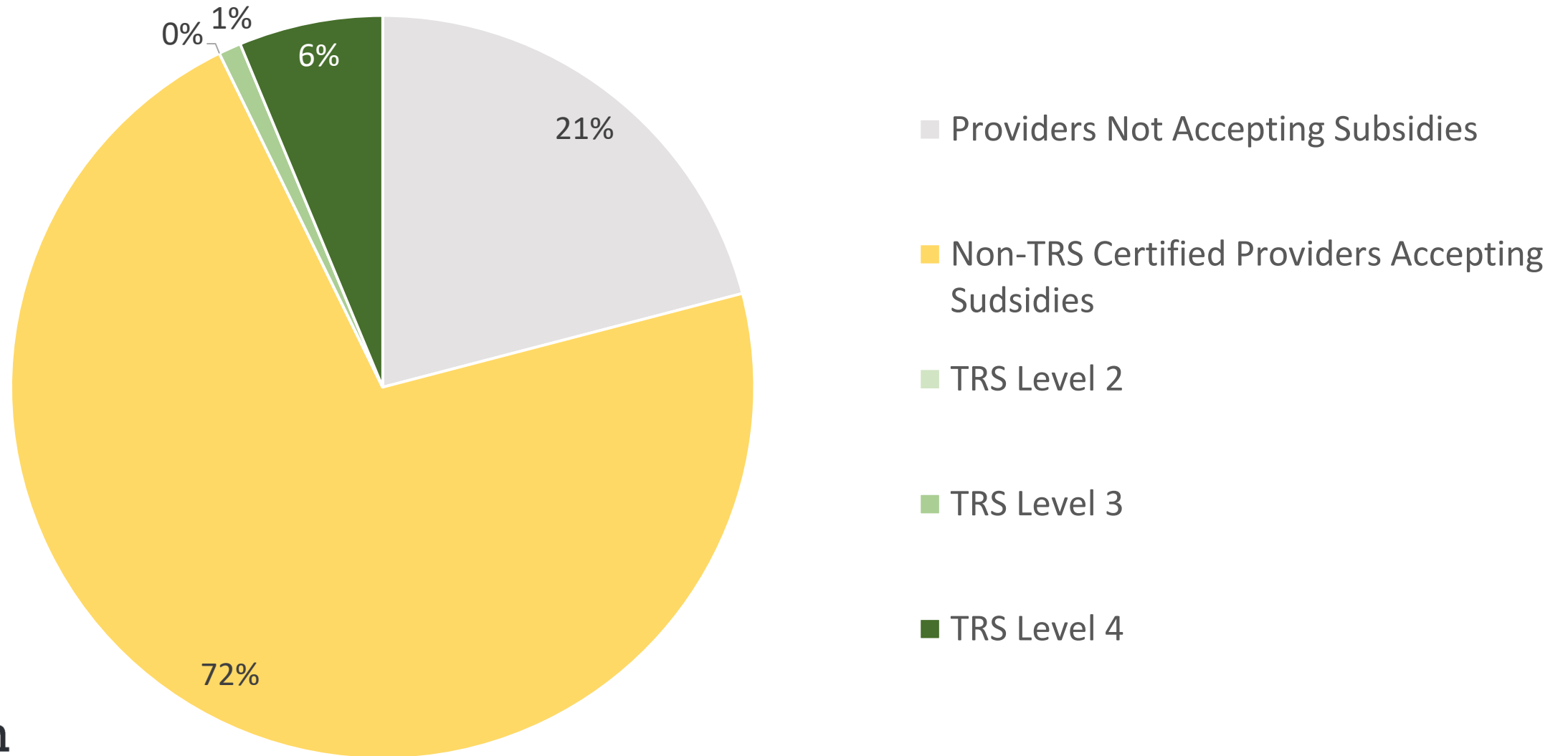
n=Total number of licensed child care providers in each region

Texas Rising Star Level Comparison by Region

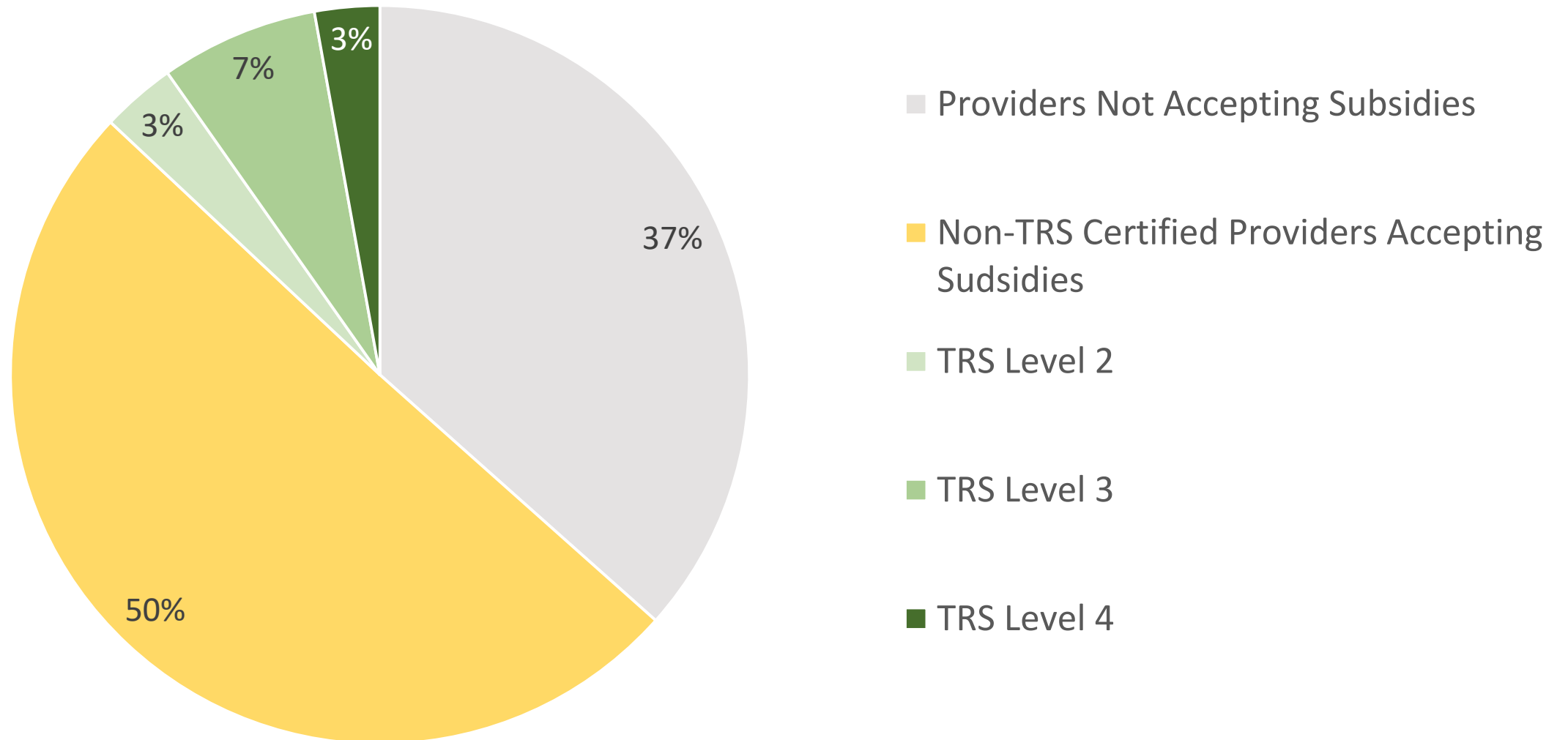
n=Total number of TRS providers in each region



Texas Rising Star Levels as Share of All Providers: Hidalgo County



Texas Rising Star Levels as Share of All Providers: Cameron County



Presentation Outline

Why Quality Child Care Matters

Subsidized Child Care Overview

Problems Facing Child Care in Texas

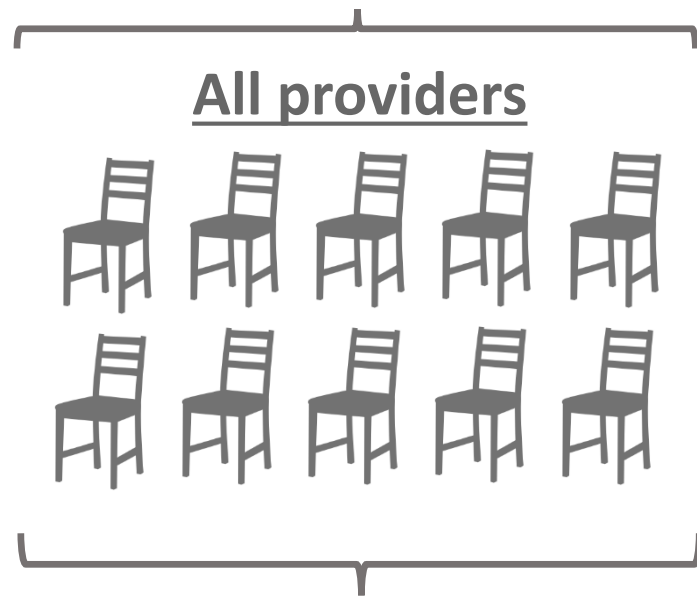
The Status of the Rio Grande Valley

Policy Solutions

How we calculated the supply and demand for child care

For more information on our methodology, please visit: <http://childrenatrisk.org/texas-child-care-desert-methodology/>

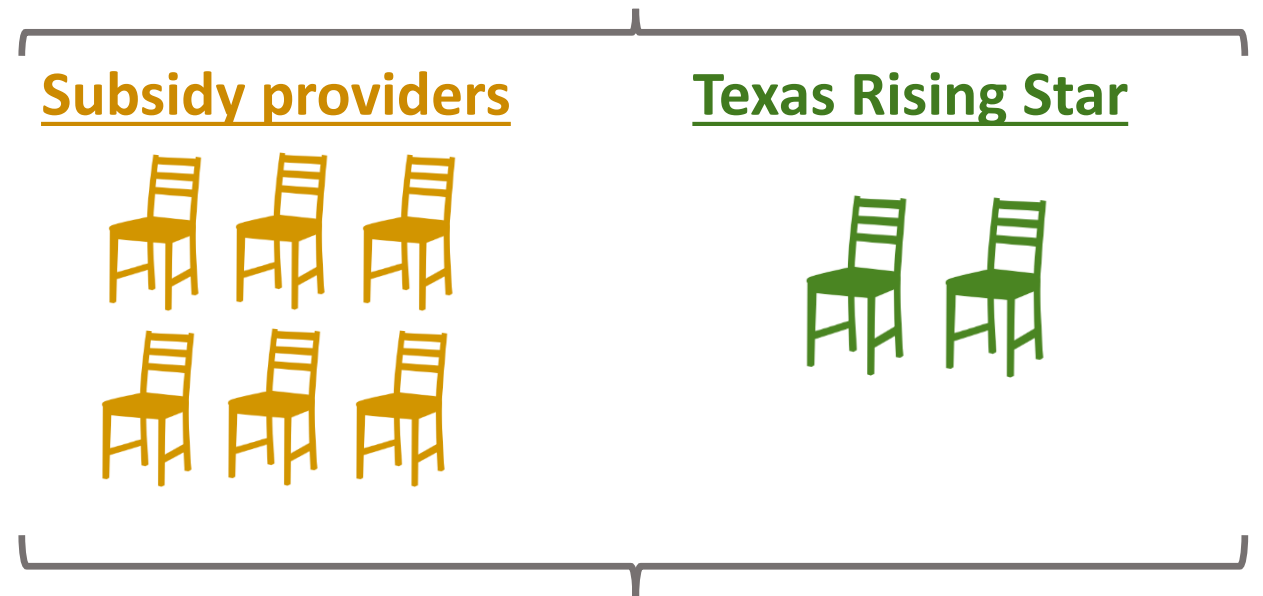
Includes supply of **all** child care seats based on licensed capacity*



Includes demand among **all** children under 6 with working parents

Supply

Includes estimated supply of subsidy seats* based on each TWC board region's subsidy target

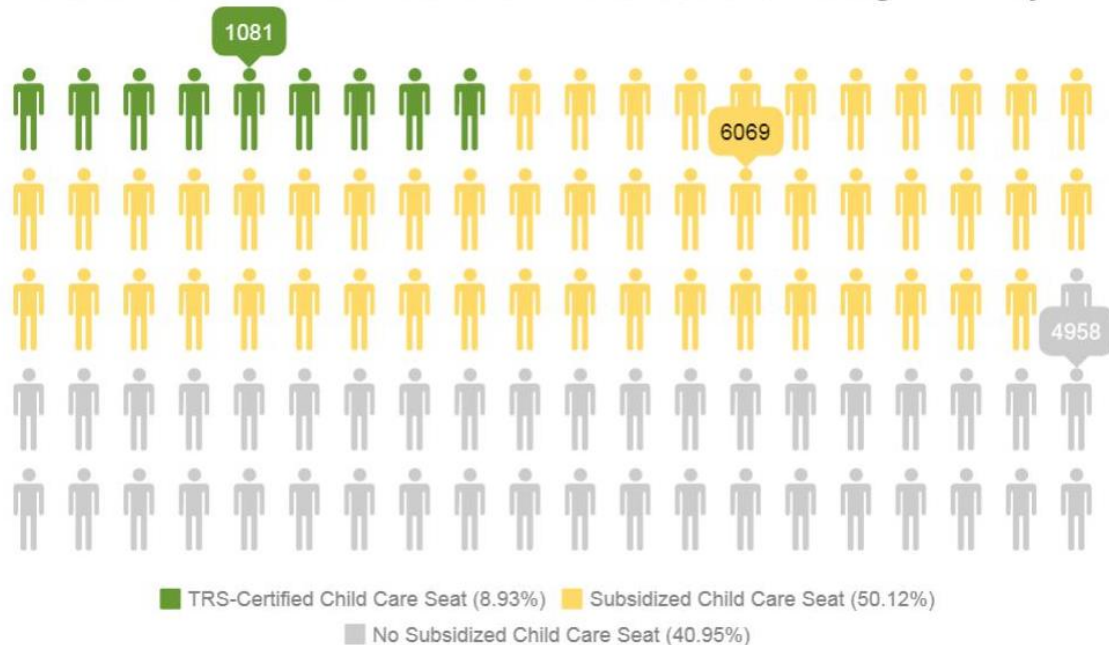


Only includes demand among **low-income** children under 6 with working parents

Demand

Key Findings for Hidalgo County

Lack of Access to Subsidized Child Care in Hidalgo County



There are **5,000 more** low-income children than subsidized child care seats (41% lack access)

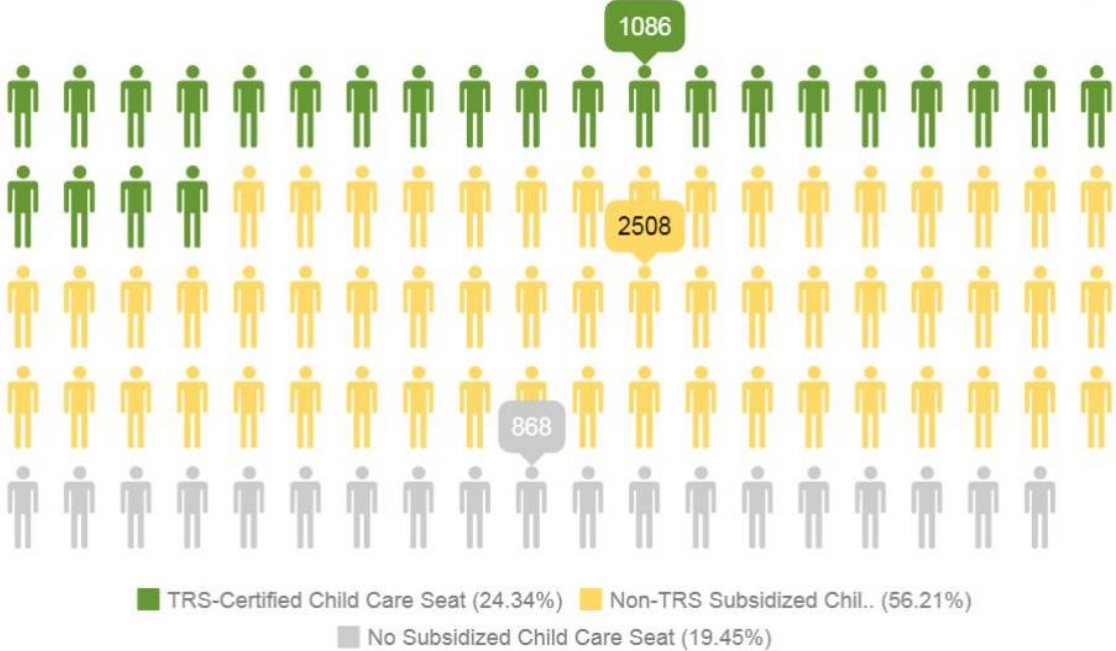
There are **11,000 more** low-income children than TRS-certified seats (91% lack access)

Statewide, 71% of low-income children lack access to a subsidized seat

94% lack access to a TRS-certified seat

Key Findings for Cameron County

Lack of Access to Subsidized Child Care in Cameron County



There are **900 more** low-income children than subsidized child care seats (19% lack access)

There are **3,400 more** low-income children than TRS-certified seats (76% lack access)

Statewide, 71% of low-income children lack access to a subsidized seat
94% lack access to a TRS-certified seat

Key Findings for Cameron and Hidalgo Counties



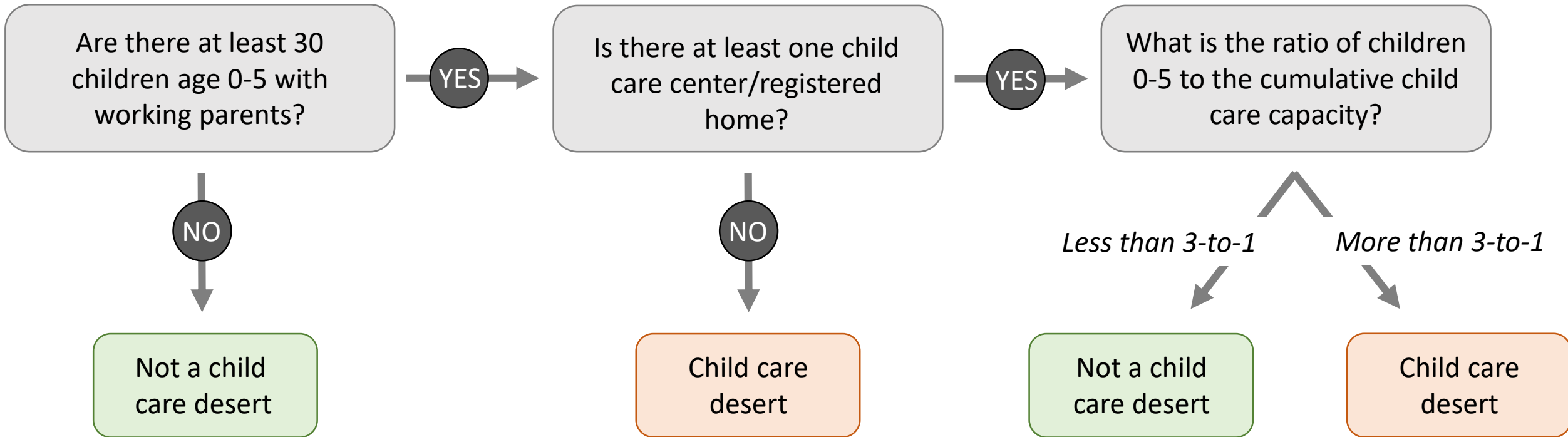
Focus on quality: Hidalgo County has **highest proportion** TRS level-4 certification and Cameron County has **among the highest** TRS participation in Texas



Subsidy availability: Hidalgo and Cameron Counties both exceed the statewide average in subsidy availability

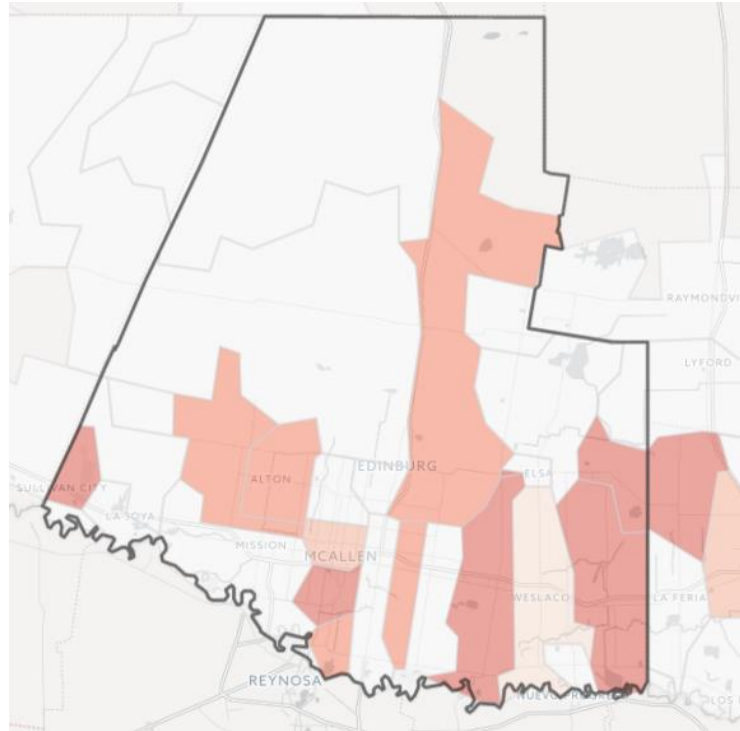
How we calculated child care deserts

Is this ZIP code a child care desert?



Subsidized and TRS deserts only include **low-income** children and providers that accept subsidy/are TRS-certified

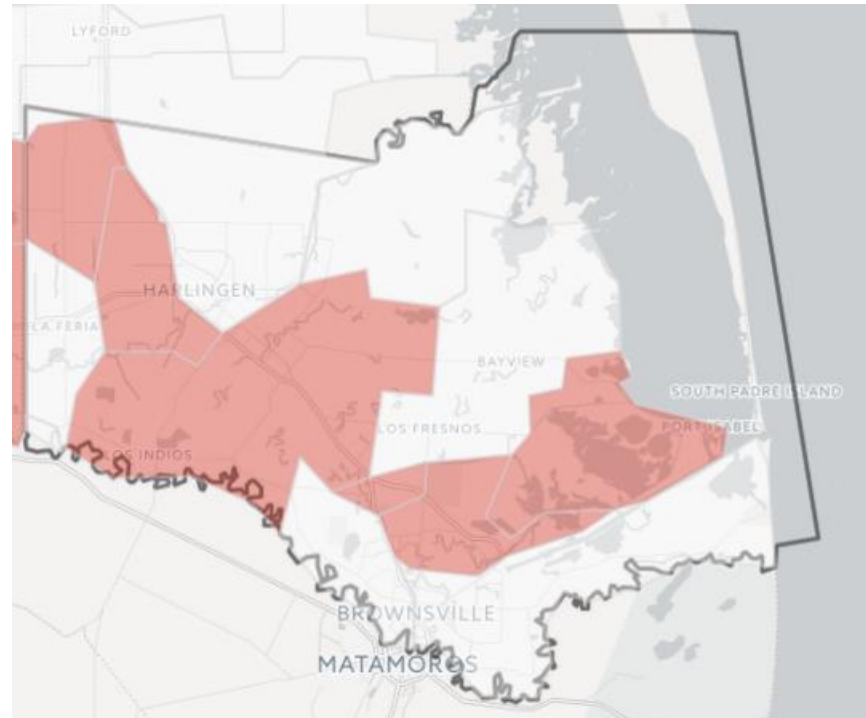
Hidalgo County Characteristics



Child Care Seats	Subsidized Child Care Seats	Texas Rising Star Seats	TRS 4-star Seats
1124 per thousand	591 per thousand	89 per thousand	83 per thousand

Only includes child care demand among **low-income** children

Cameron County Characteristics



Child Care Seats	Subsidized Child Care Seats	Texas Rising Star Seats	TRS 4-star Seats
1149 per thousand	805 per thousand	243 per thousand	65 per thousand

Only includes child care demand among **low-income** children

Child Care Deserts in the Rio Grande Valley

<http://childrenatrisk.org/childcaredesertmap/>

Presentation Outline

Why Quality Child Care Matters

Subsidized Child Care Overview

Problems Facing Child Care in Texas

The Status of the Rio Grande Valley

Policy Solutions

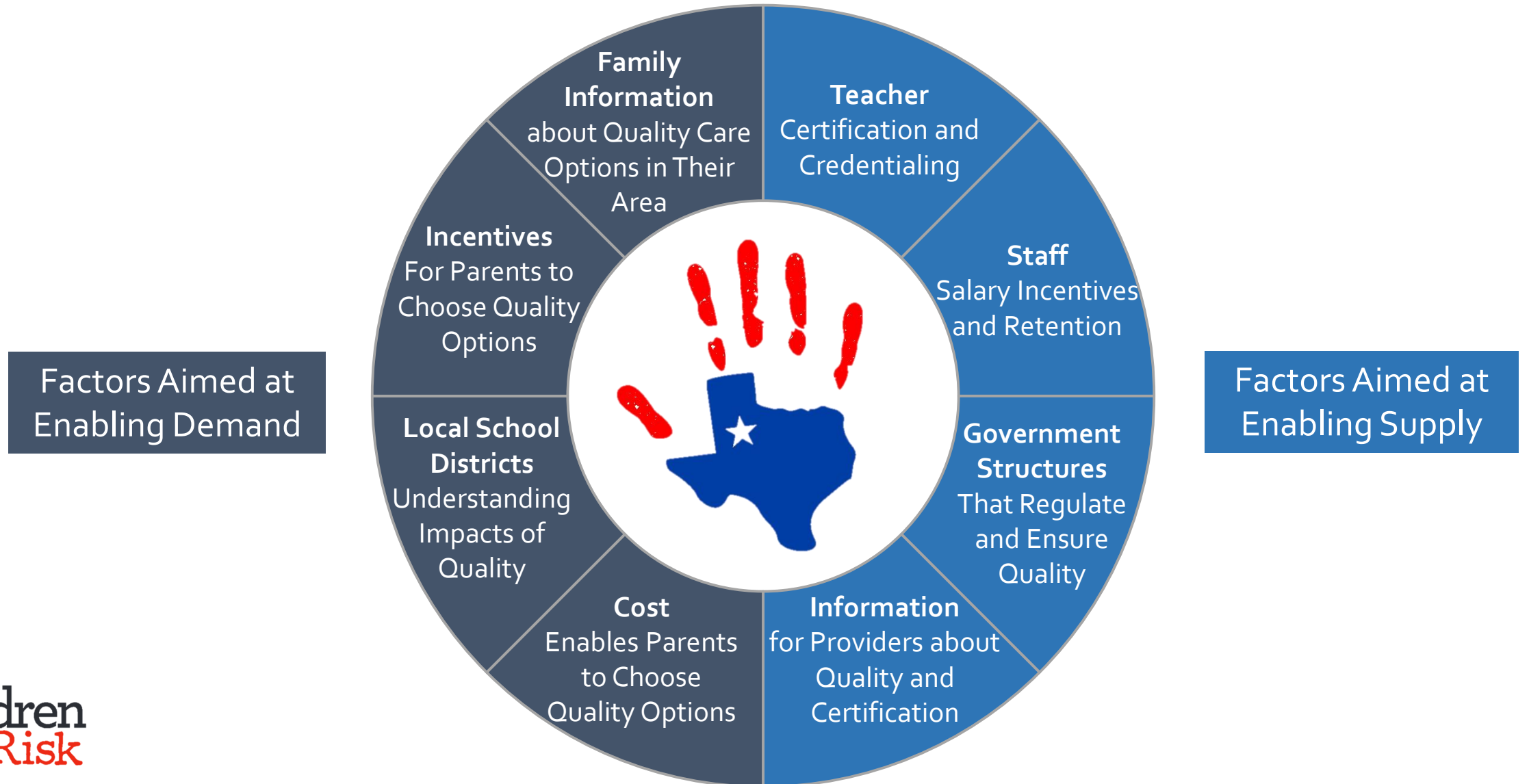
Policy Solutions?

What could work in the Rio Grande Valley?

What could work in Texas?

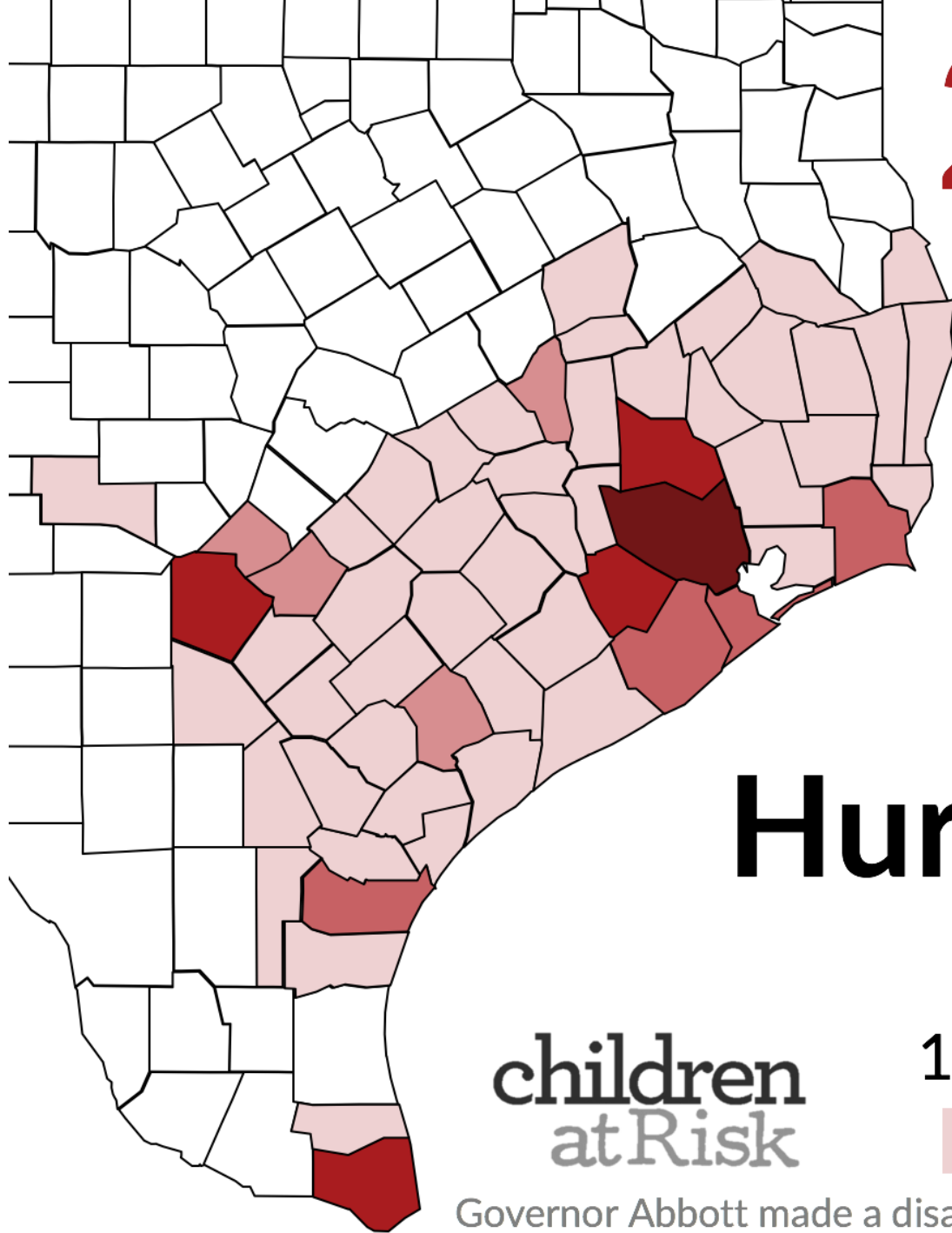


Ecosystem for Quality Child Care



2.9 million

**children live
in 58 counties
devastated by
Hurricane Harvey**



**children
atRisk**

Number of children
1k 25k 50k 100k 1 mill.



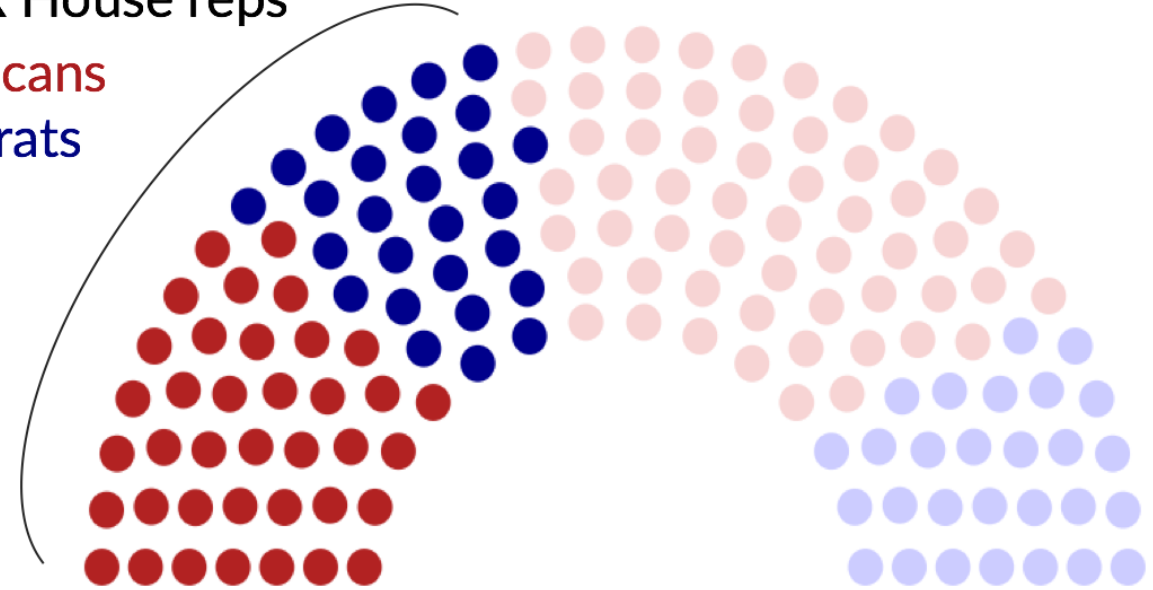
Governor Abbott made a disaster proclamation for these 58 counties on 8/27/17

Who represents the 2.9m Texas children affected by Hurricane Harvey?

children
atRisk

Source: CHILDREN AT RISK analysis of data on legislative representation in the 58 counties declared disaster areas by Governor Abbott

44% of TX House reps
38 Republicans
27 Democrats



58% of TX Senators
9 Republicans
9 Democrats

