

A photograph of a child's playroom. In the foreground, there is a large red rectangular table with several blue and red plastic chairs. The floor is covered with a colorful interlocking foam mat in shades of red, blue, yellow, and green. To the right, there is a round red table with a small cake and decorations. In the background, there are shelves with toys, a pink toy stroller, and a doorway leading to another room. The room is brightly lit and decorated with colorful items.

Access to Quality Child Care in San Antonio, TX *September 2017*

Presentation Outline

Why Quality Child Care Matters

Subsidized Child Care Overview

Problems Facing Child Care in Texas

The Status of San Antonio

Policy Solutions

Why Quality Child Care Matters

Quality child care is quality early education, and leads to...



**Improved School-Readiness
and 3rd Grade Reading Levels**



**Higher Graduation Rates and a
Better Prepared Workforce**



More Working Families

...especially for low-income children.

Presentation Outline

Why Quality Child Care Matters

Subsidized Child Care Overview

Problems Facing Child Care in Texas

The Status of San Antonio

Policy Solutions

Subsidized Child Care in Texas

Funding from federal Child Care and Development Fund (CCDF)

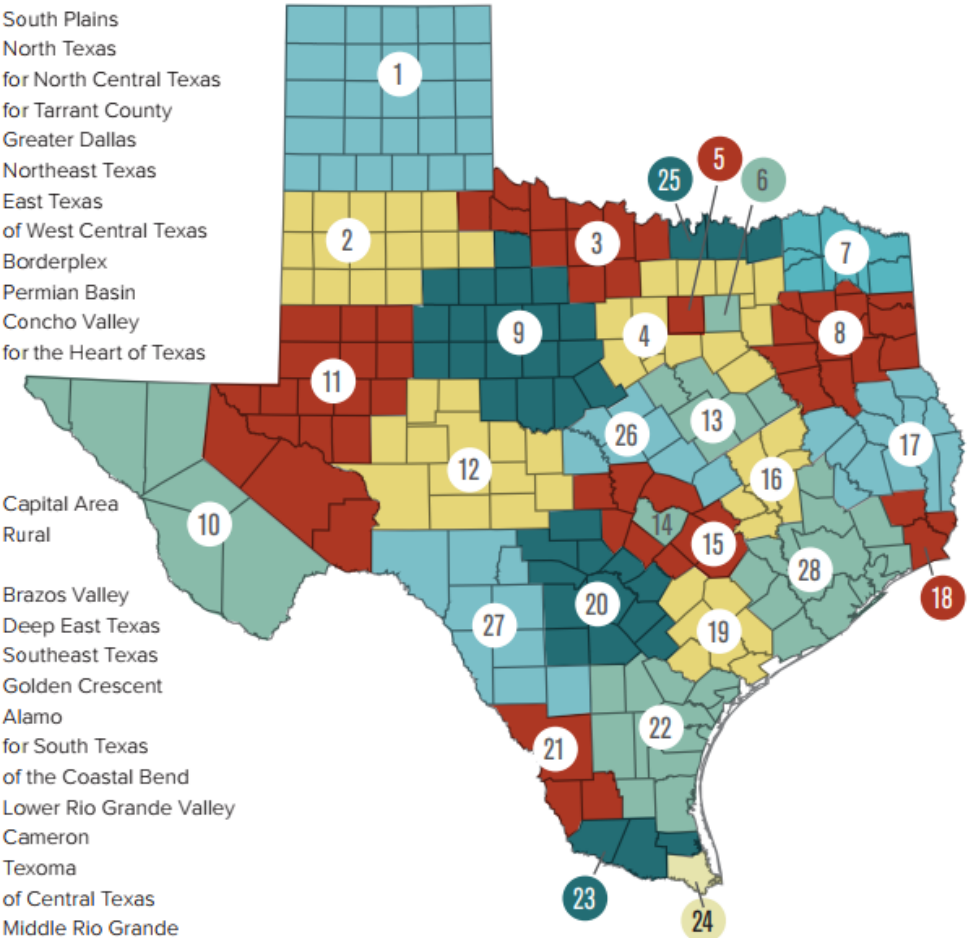
Subsidies administered by Texas Workforce Commission (TWC) through local workforce boards

Licensed centers, licensed homes, and registered homes eligible to receive subsidies

Map of Local Workforce Development Boards (Local Boards)

1. Workforce Solutions Panhandle
2. Workforce Solutions South Plains
3. Workforce Solutions North Texas
4. Workforce Solutions for North Central Texas
5. Workforce Solutions for Tarrant County
6. Workforce Solutions Greater Dallas
7. Workforce Solutions Northeast Texas
8. Workforce Solutions East Texas
9. Workforce Solutions of West Central Texas
10. Workforce Solutions Borderplex
11. Workforce Solutions Permian Basin
12. Workforce Solutions Concho Valley
13. Workforce Solutions for the Heart of Texas

14. Workforce Solutions Capital Area
15. Workforce Solutions Rural Capital Area
16. Workforce Solutions Brazos Valley
17. Workforce Solutions Deep East Texas
18. Workforce Solutions Southeast Texas
19. Workforce Solutions Golden Crescent
20. Workforce Solutions Alamo
21. Workforce Solutions for South Texas
22. Workforce Solutions of the Coastal Bend
23. Workforce Solutions Lower Rio Grande Valley
24. Workforce Solutions Cameron
25. Workforce Solutions Texoma
26. Workforce Solutions of Central Texas
27. Workforce Solutions Middle Rio Grande
28. Workforce Solutions Gulf Coast



Source: Texas Workforce Commission. (2016). *Workforce development boards' websites*. Retrieved from <http://www.twc.state.tx.us/partners/workforce-development-boards-websites>

Qualifications to Receive Subsidies

- Generally, children may receive childcare subsidies if they meet the following criteria:

- 1 Their families are low-income, they are receiving or needing protective services, or their parents are receiving or transitioning off of public assistance
- 2 They are under the age of 13
- 3 Their parent(s) require child care to work or to attend job training or an education program

Presentation Outline

Why Quality Child Care Matters

Subsidized Child Care Overview

Problems Facing Child Care in Texas

The Status of San Antonio

Policy Solutions

Problems Facing Child Care in Texas



Low participation in Texas Rising Star (TRS) quality program



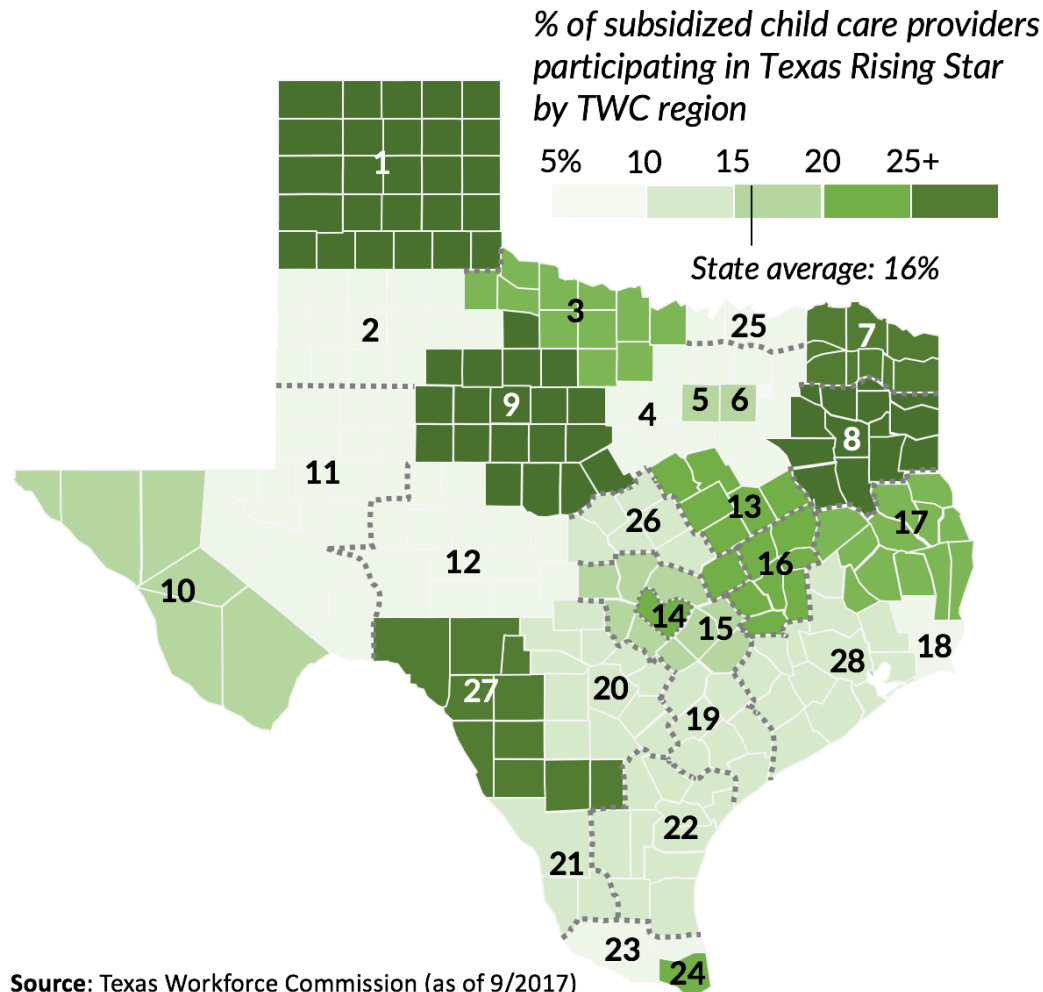
Little coordination among key stakeholders



Limited access to quality providers

Texas Rising Star Participation by TWC Board

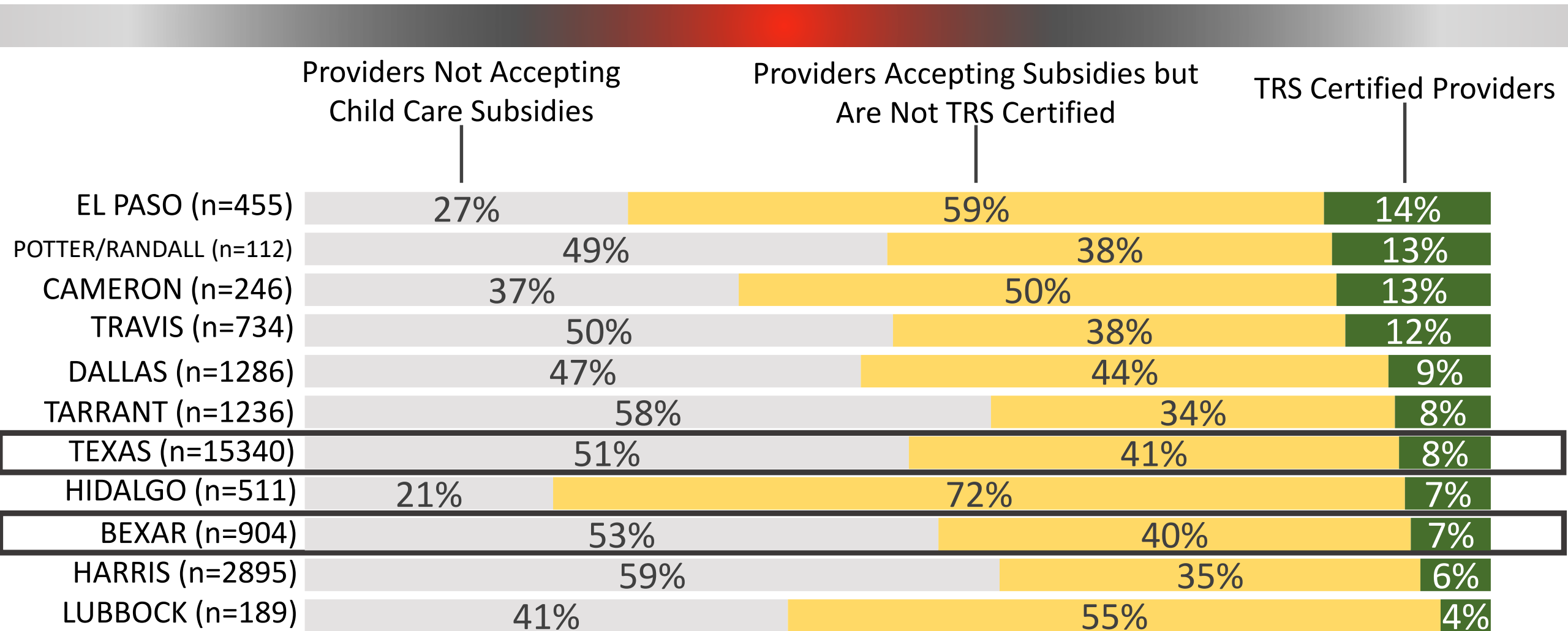
Texas Rising Star certifications among subsidy providers vary across TWC board regions



1. Panhandle: 29%
2. South Plains: 6%
3. North Texas: 22%
4. North Central Texas: 10%
5. Tarrant County: 19%
6. Greater Dallas: 16%
7. Northeast Texas: 32%
8. East Texas: 31%
9. West Central Texas: 31%
10. Borderplex: 19%
11. Permian Basin: 9%
12. Concho Valley: 5%
13. The Heart of Texas: 22%
14. Capital Area: 24%

15. Rural Capital Area: 20%
16. Brazos Valley: 23%
17. Deep East Texas: 19%
18. Southeast Texas: 6%
19. Golden Crescent: 14%
20. Alamo: 13%
21. South Texas: 12%
22. Coastal Bend: 17%
23. Lower Rio Grande Valley: 9%
24. Cameron: 21%
25. Texoma: 9%
26. Central Texas: 14%
27. Middle Rio Grande: 28%
28. Gulf Coast: 13%

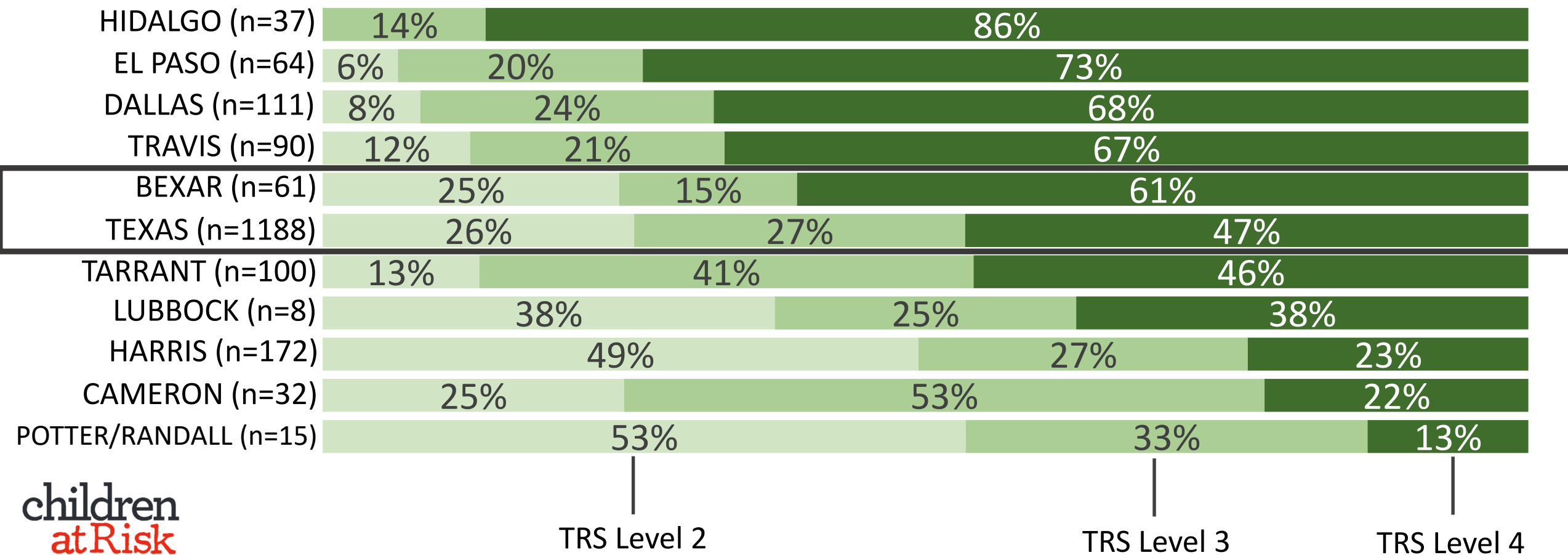
Subsidy and Texas Rising Star Participation by Region



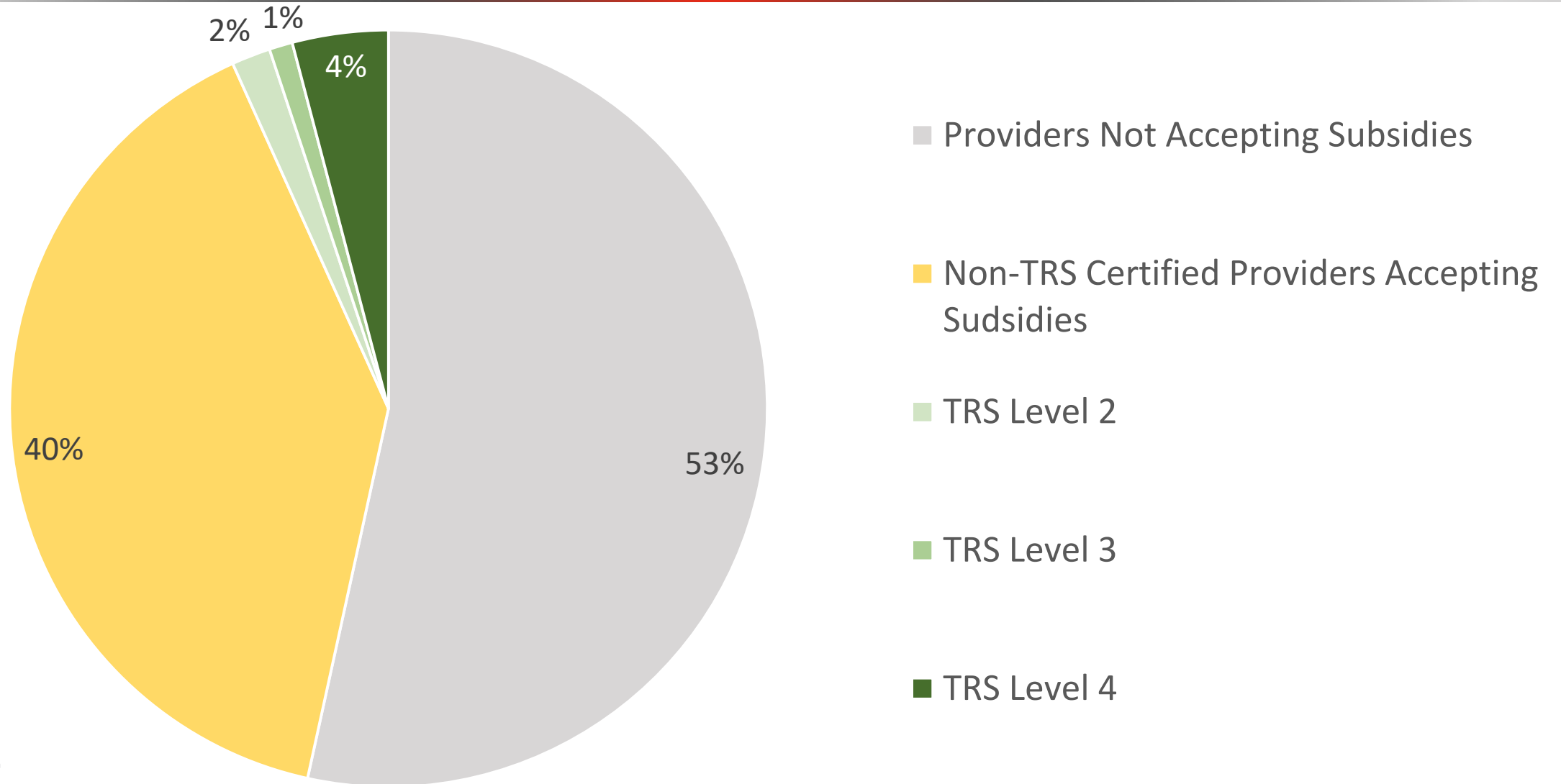
n=Total number of licensed child care providers in each region

Texas Rising Star Level Comparison by Region

n=Total number of TRS providers in each region



Texas Rising Star Levels as Share of All Providers: Bexar County



Presentation Outline

Why Quality Child Care Matters

Subsidized Child Care Overview

Problems Facing Child Care in Texas

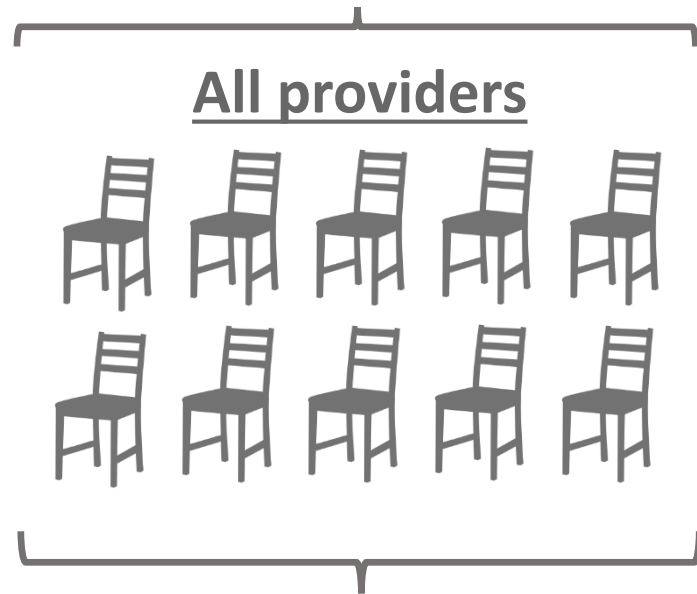
The Status of San Antonio

Policy Solutions

How we calculated the supply and demand for child care

For more information on our methodology, please visit: <http://childrenatrisk.org/texas-child-care-desert-methodology/>

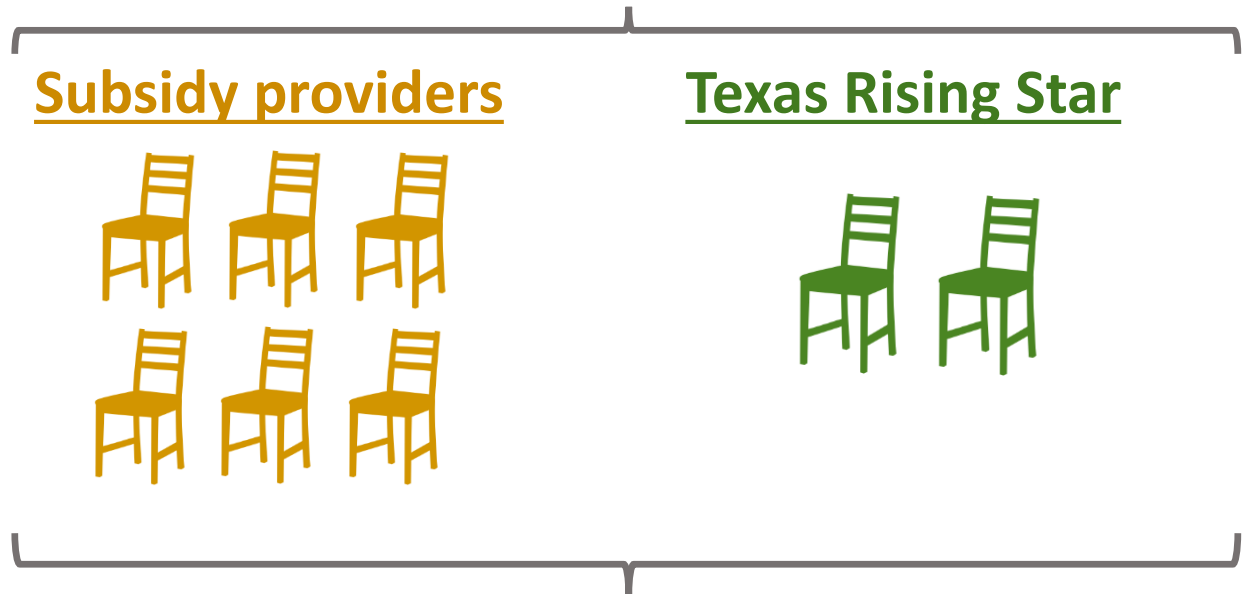
Includes supply of **all** child care seats based on licensed capacity*



Includes demand among **all** children under 6 with working parents

Supply

Includes estimated supply of subsidy seats* based on each TWC board region's subsidy target

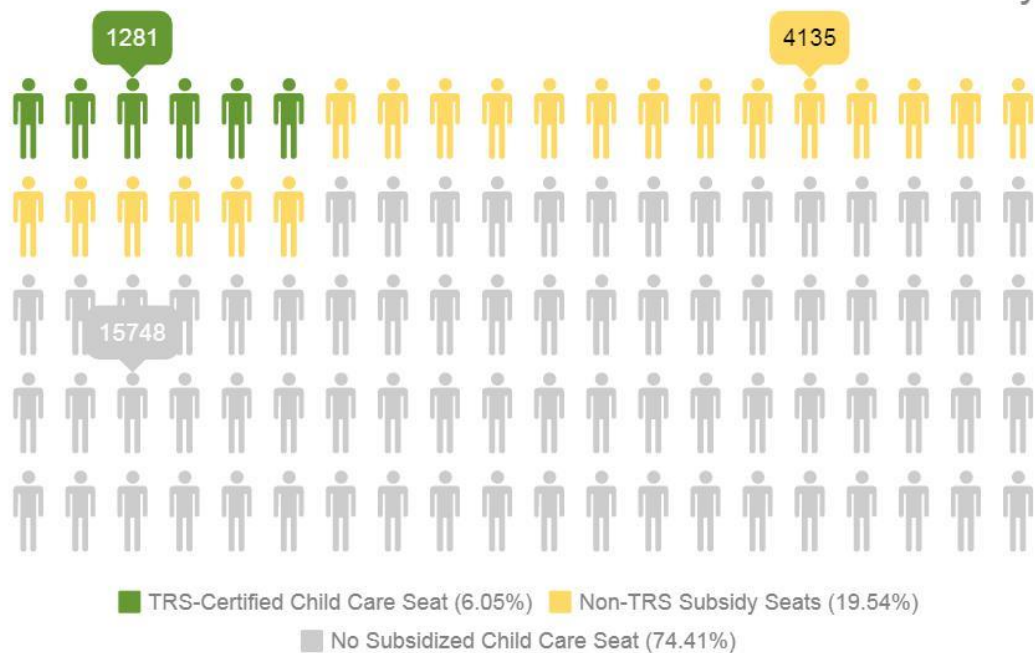


Only includes demand among **low-income** children under 6 with working parents

Demand

Key Findings for Bexar County

Lack of Access to Subsidized Child Care in Bexar County



There are **15,700 more** low-income children than subsidized child care seats (74% lack access)

There are **19,900 more** low-income children than TRS-certified seats (94% lack access)

Statewide, 71% of low-income children lack access to a subsidized seat
94% lack access to a TRS-certified seat

Key Findings for Bexar County



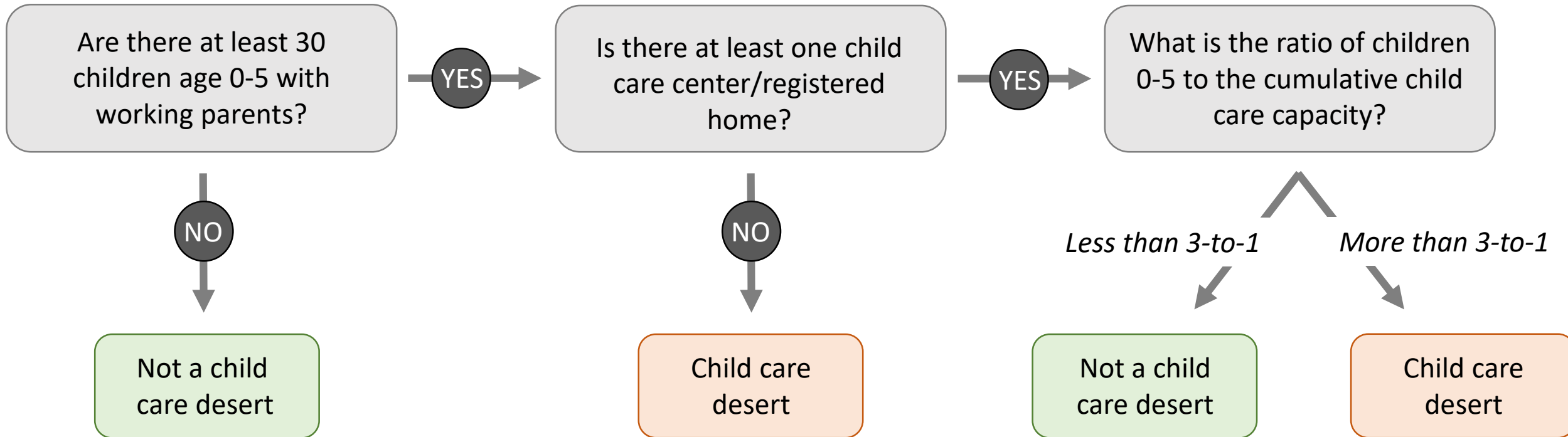
Focus on quality: Nearly **15% higher** TRS level-4 certifications than state average



Income disparity: Median household income in non-deserts **\$14,000/year** higher than in subsidized child care deserts

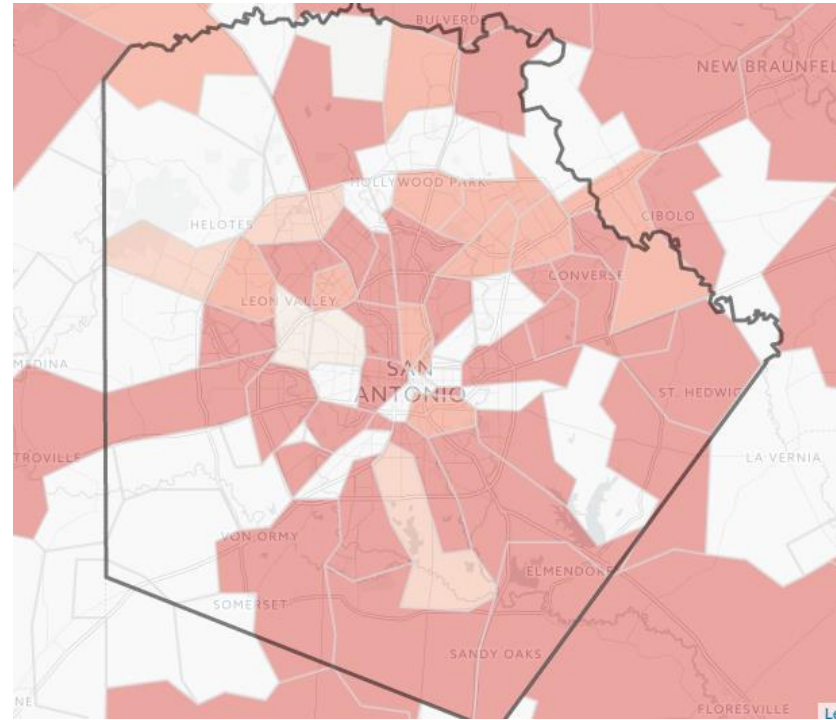
How we calculated child care deserts

Is this ZIP code a child care desert?



Subsidized and TRS deserts only include **low-income** children and providers that accept subsidy/are TRS-certified

Bexar County Characteristics



Child Care Seats	Subsidized Child Care Seats	Texas Rising Star Seats	TRS 4-star Seats
962 per Thousand	256 per Thousand	61 per thousand	46 per thousand

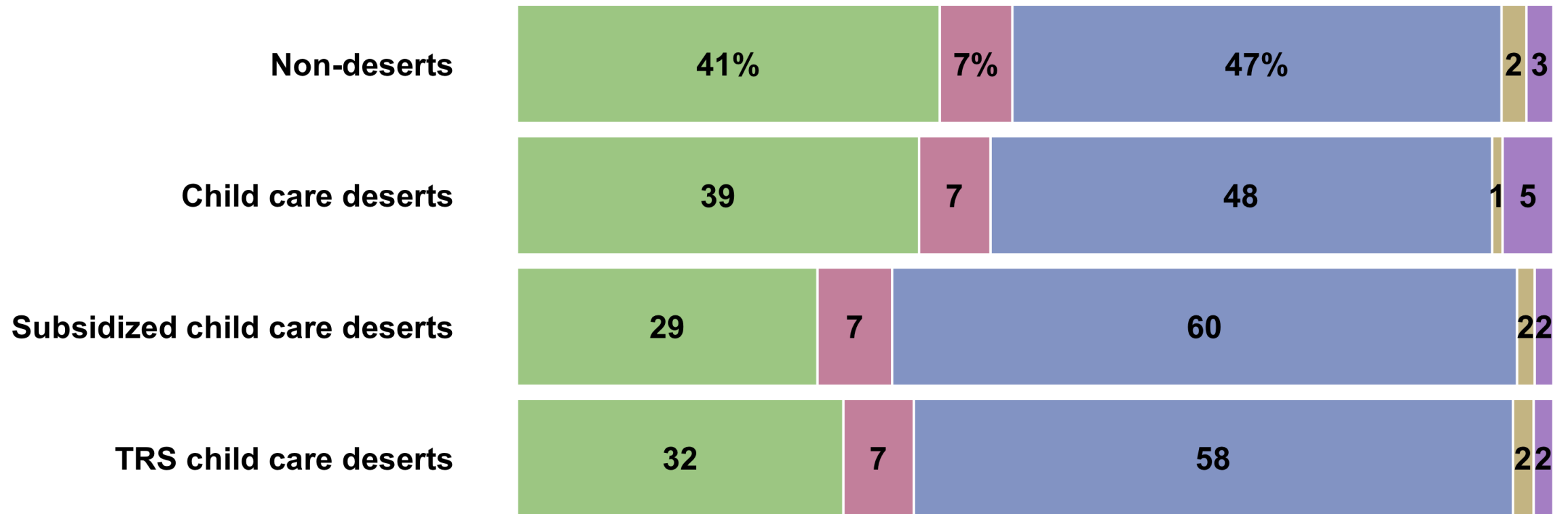
Only includes child care demand among **low-income** children

Bexar County Median Household Income by Desert Type

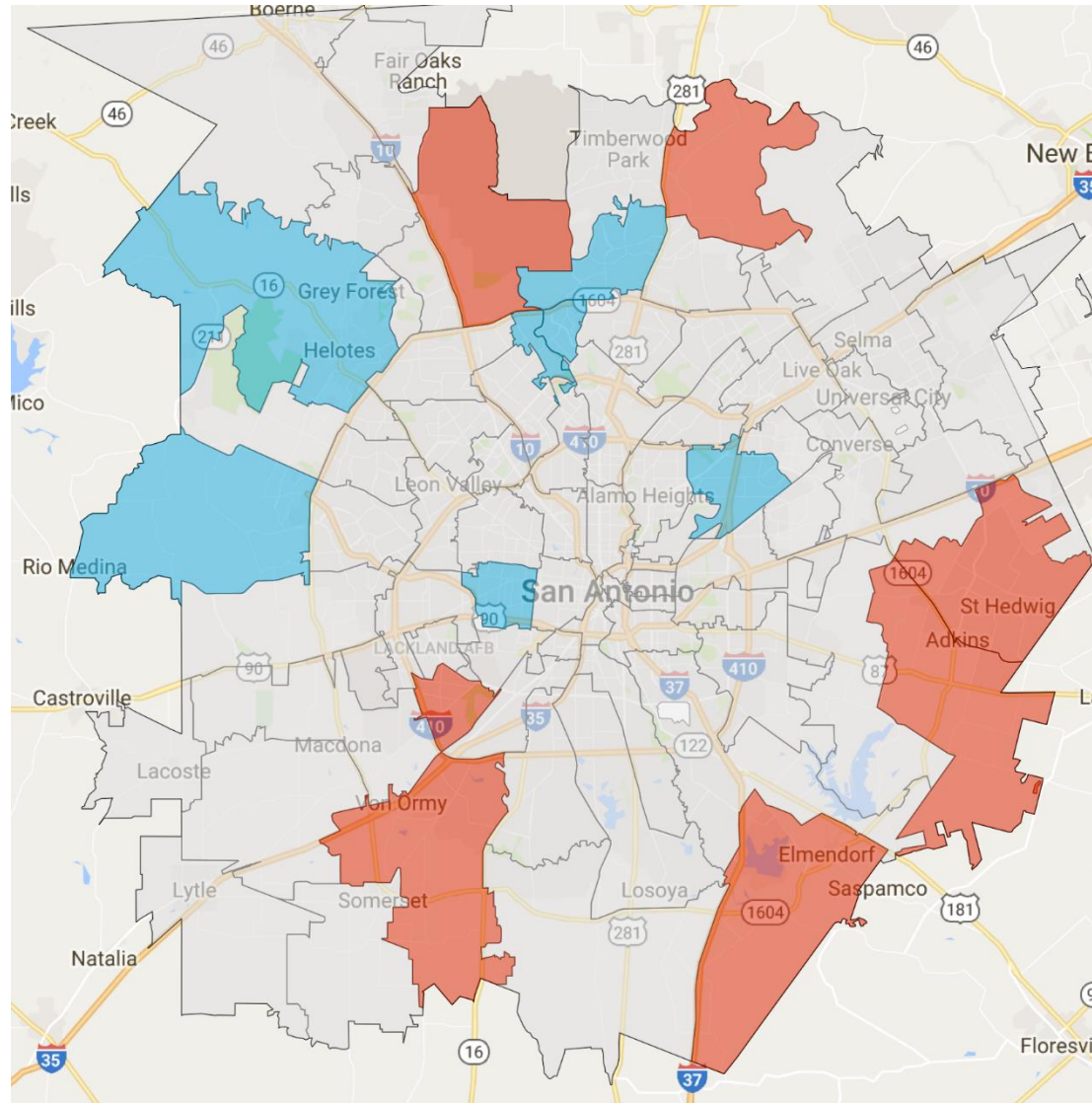


Bexar County Race and Ethnicity by Desert Type

White Black Hispanic Asian Other groups



Undersupply & Oversupply: Bexar's Subsidized Seats



Subsidized seats:
over- and under-supply
of child care seats
for low-income kids



ZIP Code	Subsidy Seats per 1000 Low-Income Children
78073	0
78101	0
78112	0
78152	0
78257	0
78261	0
78242	48

ZIP Code	Number of surplus subsidy seats
78023	+74
78218	+99
78231	+59
78237	+90
78248	+70
78253	+55
78258	+84

Other
<50 seats/1000
Oversupply (50+)

ZIP Code	Number of surplus TRS seats
78231	+59

Child Care Deserts in Houston

<http://childrenatrisk.org/childcaredesertmap/>

Presentation Outline

Why Quality Child Care Matters

Subsidized Child Care Overview

Problems Facing Child Care in Texas

The Status of San Antonio

Policy Solutions

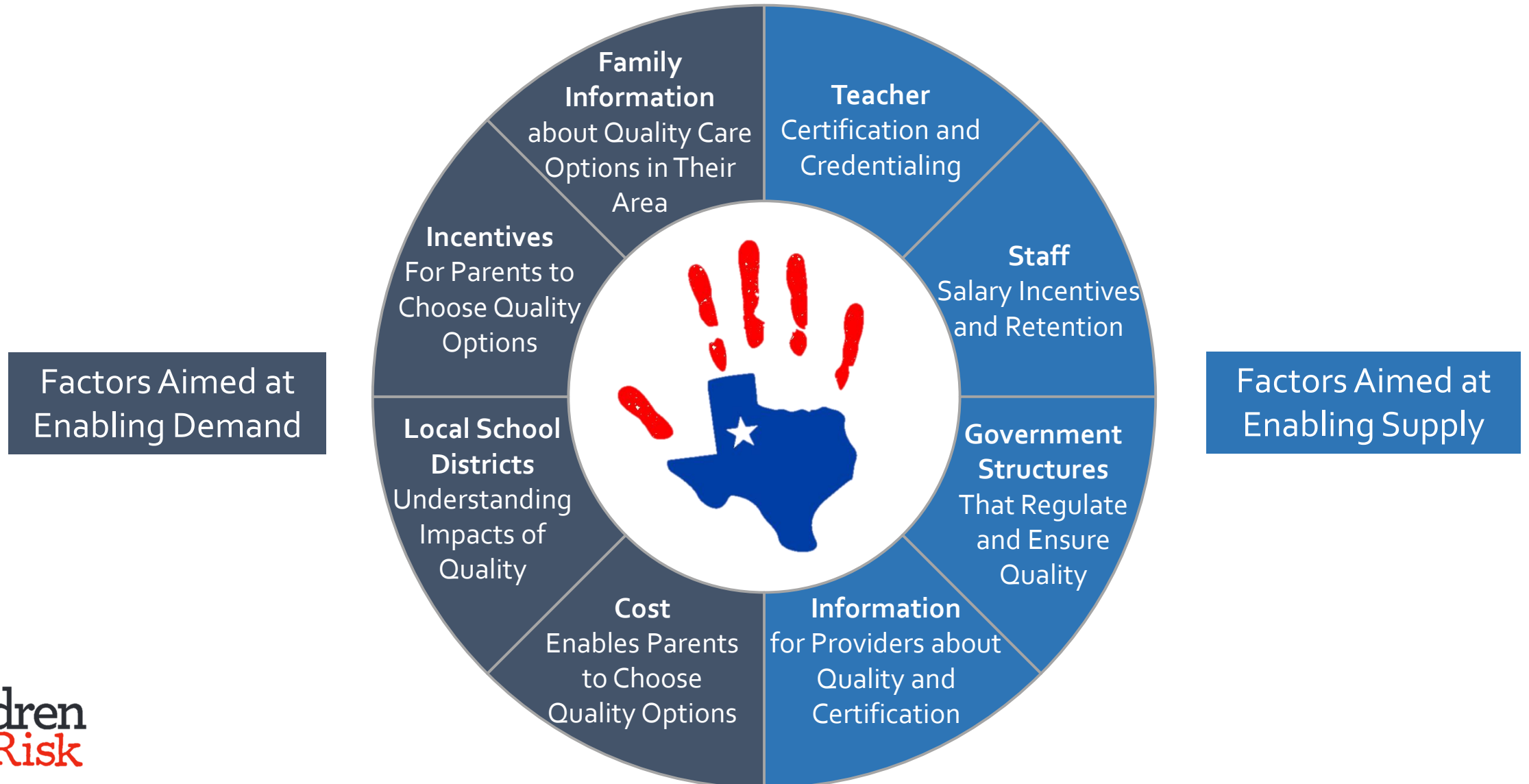
Policy Solutions?

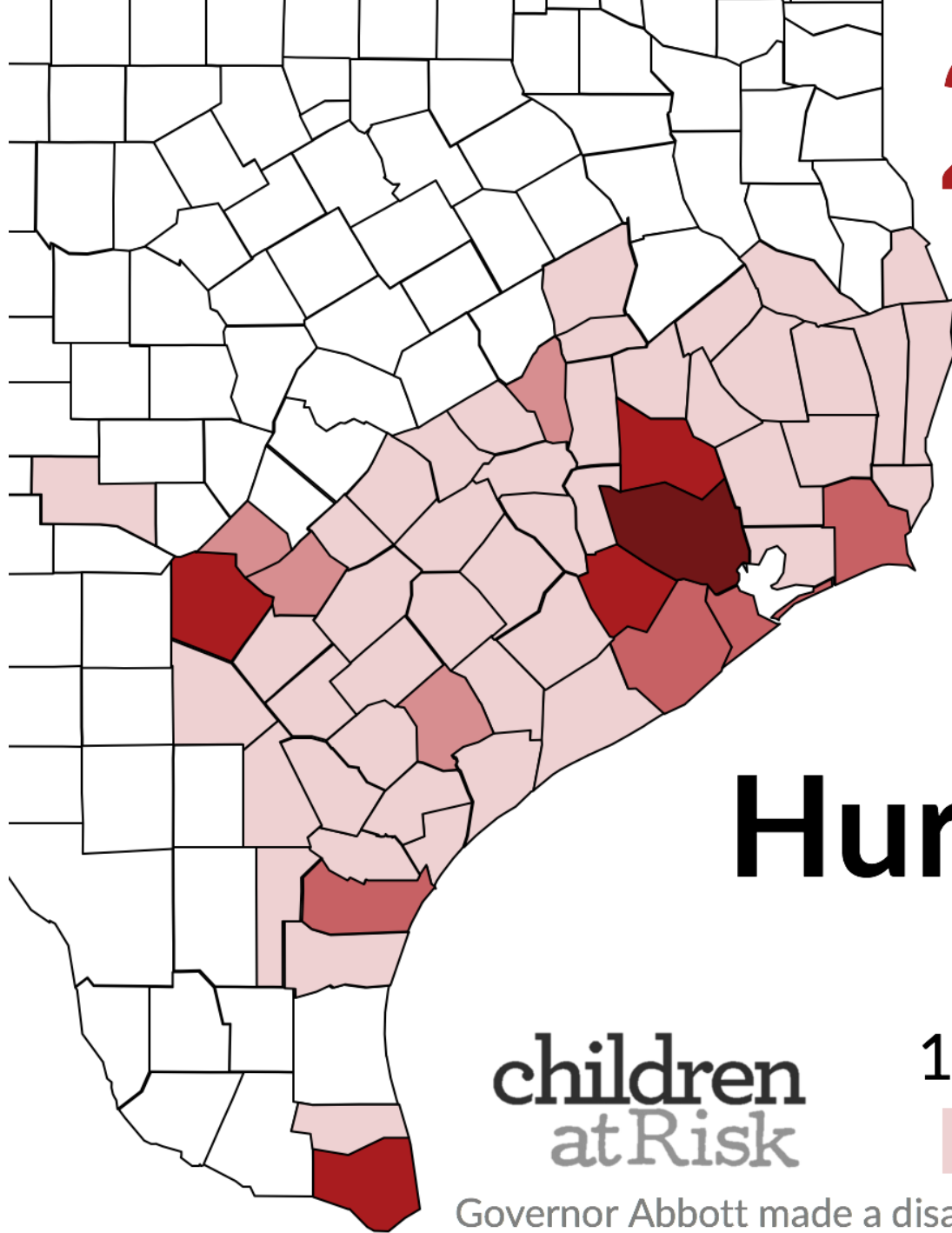
What could work in San Antonio?

What could work in Texas?



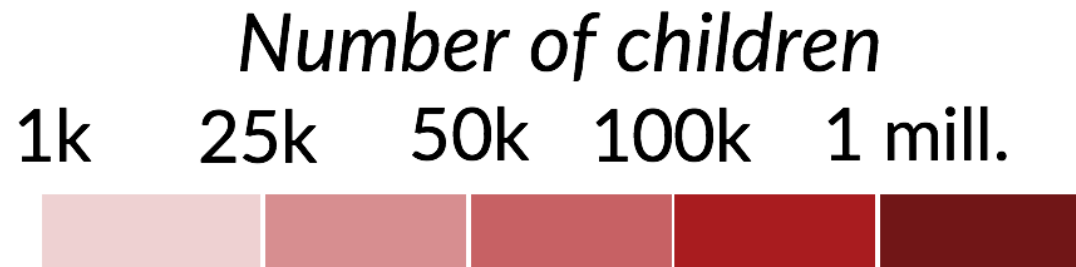
Ecosystem for Quality Child Care





2.9 million
children live
in 58 counties
devastated by
Hurricane Harvey

children
atRisk



Governor Abbott made a disaster proclamation for these 58 counties on 8/27/17

Who represents the **2.9m** Texas children affected by Hurricane Harvey?

children
atRisk

Source: CHILDREN AT RISK analysis of data on legislative representation in the 58 counties declared disaster areas by Governor Abbott

44% of TX House reps
38 Republicans
27 Democrats

58% of TX Senators
9 Republicans
9 Democrats

